



Asbestos Reassessment

Old Our Lady of the Assumption
20 Highway 55, Stoney Creek,
Ontario

Prepared for:

**Hamilton-Wentworth Catholic
District School Board**

90 Mulberry Street
Hamilton, Ontario, L8N 3R9

May 15, 2023

Pinchin File: 320582.001



Asbestos Reassessment

Old Our Lady of the Assumption, 20 Highway 55, Stoney Creek, Ontario
Hamilton-Wentworth Catholic District School Board

May 15, 2023

Pinchin File: 320582.001

Issued to: Hamilton-Wentworth Catholic District
School Board
Issued on: May 15, 2023
Pinchin File: 320582.001
Issuing Office: Hamilton, ON



Hamilton-Wentworth
Catholic District School Board

Believing. Achieving. Serving

Author: Emily Balfour
Project Manager
335.889.5147
ebalfour@pinchin.com

Reviewer: Leslie Heywood, BEng Mgt
Senior Project Manager
289.237.4294
lheywood@pinchin.com



EXECUTIVE SUMMARY

Hamilton-Wentworth Catholic District School Board (Client) retained Pinchin Ltd. (Pinchin) to conduct an asbestos building materials reassessment at the subject building.

The objective of the reassessment was to evaluate the condition and quantity of previously reported asbestos-containing materials (ACM) and develop corrective action plans as required for the purposes of long-term management. The results of this reassessment are not intended for construction, renovation, demolition or project tendering purposes.

Summary of Recommendations

The following is a summary of significant recommendations; refer to the body of the report for detailed recommendations:

- Perform a reassessment of asbestos-containing materials on an annual basis.
- Perform a pre-construction assessment and remove all asbestos-containing materials (ACM) prior to alteration or maintenance work if ACM may be disturbed by the work.
- Follow appropriate safe work procedures when handling or disturbing asbestos.
- Sample any presumed ACM prior to alteration or maintenance work if presumed ACM may be disturbed by the work.
- Remediate the materials as described in Section 4.2.

This Executive Summary is subject to the same standard limitations as contained in the report and must be read in conjunction with the entire report.



TABLE OF CONTENTS

1.0 INTRODUCTION AND SCOPE 1
 1.1 Scope of Assessment and Methodology 1
2.0 BACKGROUND INFORMATION 1
 2.1 Building Year of Construction and Additions 1
 2.2 Existing Reports..... 1
3.0 FINDINGS 2
 3.1 Excluded Asbestos Materials 2
 3.2 Summary of Building Materials 3
4.0 RECOMMENDATIONS..... 10
 4.1 General 10
 4.2 Remedial Work 10
 4.3 On-going Management and Maintenance 10
5.0 TERMS AND LIMITATIONS 11
6.0 REFERENCES..... 11

APPENDICES

APPENDIX I Asbestos Analytical Certificates
APPENDIX II Location List
APPENDIX III Hazardous Materials Summary / Sample Log Report
APPENDIX IV All Data Report
APPENDIX V Drawings
APPENDIX VI Methodology



1.0 INTRODUCTION AND SCOPE

Hamilton-Wentworth Catholic District School Board (Client) retained Pinchin Ltd. (Pinchin) to conduct an asbestos building materials reassessment at Old Our Lady of the Assumption located at 20 Highway 55, Stoney Creek, Ontario.

The reassessment was performed on January 23, 2023.

The objectives of the reassessment were to document the locations, quantities and conditions of previously identified asbestos-containing building materials and develop corrective action plans as required. This reassessment is only to be used for the purposes of long-term management and routine maintenance. The results of this reassessment are not to be used for construction, renovation, demolition or project tendering purposes.

1.1 Scope of Assessment and Methodology

The objective of the reassessment was to evaluate the condition and quantity of previously reported asbestos-containing materials (ACM) and develop corrective action plans as required.

Pinchin conducted a review of previously identified asbestos-containing materials (ACM) to evaluate the current condition of all accessible ACMs identified in the most recent assessment.

As per the original scope of work, concealed locations such as ceiling spaces above solid ceilings, shafts and chases were accessed via existing access panels. Our investigation did not include demolition of drywall or plaster walls to view concealed conditions. Structural items or exterior building finishes were not removed to determine the presence of concealed materials.

For further details on the methodology including test methods, refer to Appendix VI.

2.0 BACKGROUND INFORMATION

2.1 Building Year of Construction and Additions

Item	Details
Year of Construction	1962
Year of Additions	1966

2.2 Existing Reports

Pinchin previously prepared the following report, which has been reviewed and relied upon as part of this assessment:



- Asbestos Reassessment Report, Our Lady of the Assumption, 55 Highway 20 South, Stoney Creek, ON, August 2022, Prepared by Pinchin Ltd., Pinchin File: 303992.004.

3.0 FINDINGS

The following section summarizes the findings of the reassessment and provides a general description of the asbestos materials identified. The previously identified ACMs were observed to be in good condition, with the exception of materials identified for remedial work in Section 4.2.

Previous analytical sample results have been relied upon and were included in the original asbestos assessment report completed by MTE Consultants Inc. Additional samples results, where collected by Pinchin, have been included in Appendix I.

3.1 Excluded Asbestos Materials

A number of materials which might contain asbestos were not sampled during this reassessment due to limitations in scope and methodology. Where present, these materials are assumed to contain asbestos until otherwise proven by sampling and analysis. These materials are not shown on the drawings in Appendix V. Excluded materials presumed to contain asbestos include:


- Roofing felts and tar, mastics
- Floor levelling compound
- Ceramic tile setting compound
- Electrical components
- Mechanical packing, ropes and gaskets
- Vermiculite
- Adhesives and duct mastics
- Caulking and putties
- Fibre-reinforced paints and coatings
- Paper products
- Soffit and fascia boards
- Fire resistant doors
- Stucco, plaster or other cementitious parge coatings
- Vibration dampers on HVAC equipment
- Terrazzo
- Ropes and gaskets in cast-iron bell and spigot joints




- Sealants on pipe threads

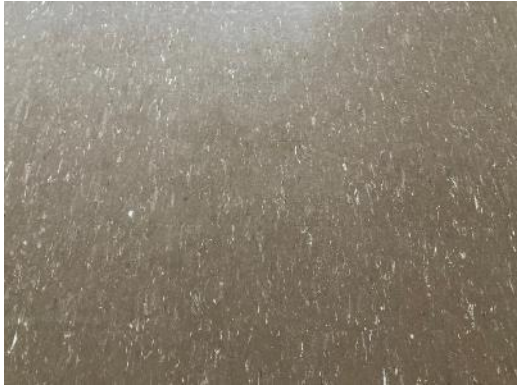


3.2 Summary of Building Materials


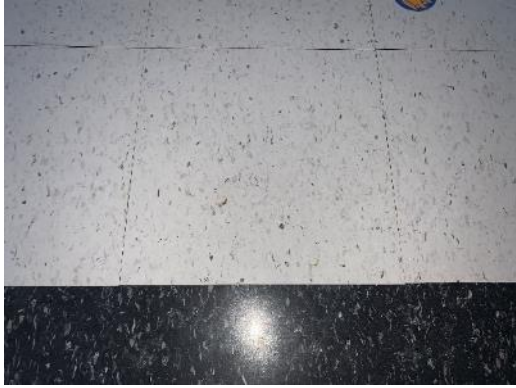

This section includes a summary of materials that have been confirmed asbestos-containing by sample analysis, presumed asbestos-containing by visual identification, or confirmed non-asbestos by sampling or based on the manufacture date and known end of use of asbestos in these products.



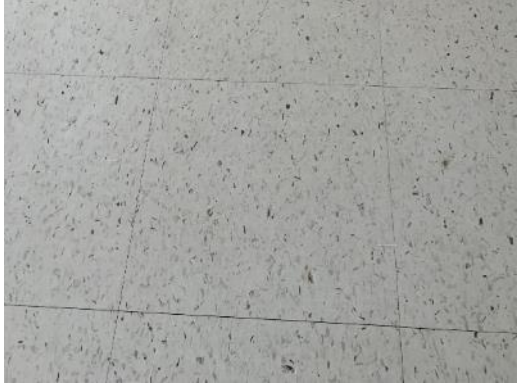
The locations of samples from the previous assessments performed by Pinchin have been included on the drawings in Appendix V.

Material and Application	Asbestos Type	Photo
Parging cement is present on pipe fittings (elbows, valves, tees, hangers etc.)	Chrysotile	
Sweatwrap insulation (brown layered paper) is present on straight sections of pipes.	None Detected	
Remaining pipes are either uninsulated or insulated with non-asbestos fibreglass or elastomeric insulation (Armaflex).	None	
Ducts are either uninsulated or insulated with non-asbestos fibreglass.	None	
Mechanical equipment is either uninsulated or insulated with non-asbestos fibreglass.	None	



Material and Application	Asbestos Type	Photo
<p>24"x48" lay-in ceiling tiles, with a short fissure random pattern are present in the Gymnasium (Location 101).</p>	<p>Presumed</p>	
<p>Remaining ceiling tiles are presumed to be non-asbestos based on previous sampling or the material of manufacture (fibreglass).</p>	<p>None</p>	
<p>Plaster present on walls and ceilings is non-asbestos.</p>	<p>Trace Chrysotile (<0.5%)</p>	
<p>Drywall joint compound is present on wall and ceiling finishes.</p>	<p>Chrysotile</p>	
<p>Vinyl floor tiles, 9"x9" red with white streak are present.</p>	<p>Chrysotile (tile) Presumed (mastic)</p>	

Material and Application	Asbestos Type	Photo
<p>Vinyl floor tiles, 9"x9" brown with white fleck are present.</p>	<p>Presumed (tile) Presumed (mastic)</p>	
<p>Vinyl floor tiles, 9"x9" blue with white streak are present.</p>	<p>Presumed (tile) Presumed (mastic)</p>	
<p>Vinyl floor tiles, 9"x9" tan with white streak are present.</p>	<p>Presumed (tile) Presumed (mastic)</p>	

Material and Application	Asbestos Type	Photo
<p>Vinyl floor tiles, 9"x9" grey with white and black fleck are present.</p>	<p>Presumed (tile) Presumed (mastic)</p>	
<p>Vinyl floor tiles, 12"x12" cream with rose fleck are present.</p>	<p>Presumed (tile) Presumed (mastic)</p>	
<p>Vinyl floor tiles, 12"x12" black dense fleck are present.</p>	<p>Presumed (tile) Presumed (mastic)</p>	

Material and Application	Asbestos Type	Photo
<p>Vinyl floor tiles, 12"x12" beige with brown and white streak are present.</p>	<p>Presumed (tile) Presumed (mastic)</p>	
<p>Vinyl floor tiles, 12"x12" white with black streak are present.</p>	<p>Presumed (tile) Presumed (mastic)</p>	
<p>Vinyl floor tiles, 12"x12" white with black and grey fleck are present.</p>	<p>Presumed (tile) Presumed (mastic)</p>	

Material and Application	Asbestos Type	Photo
Vinyl floor tiles, 12"x12" aqua dense fleck are present.	Presumed (tile) Presumed (mastic)	
Vinyl floor tiles, 12"x12" grey dense fleck are present.	None Detected (tile) Presumed (mastic)	
Vinyl floor tiles, 12"x12" beige dense fleck are present.	None (tile) Presumed (mastic)	

Material and Application	Asbestos Type	Photo
Paper heat shields are present in light fixtures.	Presumed	
White mastic is present as a sink undercoating.	Presumed	

Additional notes on the asbestos-containing drywall joint compound discussed above:

- Drywall (gypsum board) and drywall joint compound is present as a wall and ceiling finish in the school. As per the methodology, drywall joint compound is sampled at exterior walls, columns or other locations that are unlikely to have been renovated in an attempt to determine the presence of asbestos in the original drywall compound. Samples of drywall joint compound were collected (samples S0008A-C) and it was found that at least one sample contains chrysotile asbestos. The asbestos-positive results indicate that at minimum, the original drywall joint compound application contains asbestos, and all drywall joint compound should be presumed to contain asbestos. Further sampling may be considered in an attempt to delineate asbestos-containing drywall compound from newer, non-asbestos drywall compound.

4.0 RECOMMENDATIONS

4.1 General

Perform a detailed intrusive assessment prior to building renovation or demolition operations. The assessment should include; destructive testing (i.e. coring and/or removal of building finishes and components), sampling of other hazardous materials (lead, mercury, PCBs, mould, etc.), and materials not tested in this study (i.e. excluded asbestos materials).

4.2 Remedial Work

The following remedial work is recommended.

Material, Quantity, Condition and Photo #	Location Name (Location #)	Recommended Procedure
Pipe insulation, 1 fitting, poor condition, Photo 1	Corridor (Location 102)	Asbestos precautions for entry into ceiling space which may disturb asbestos in poor condition.

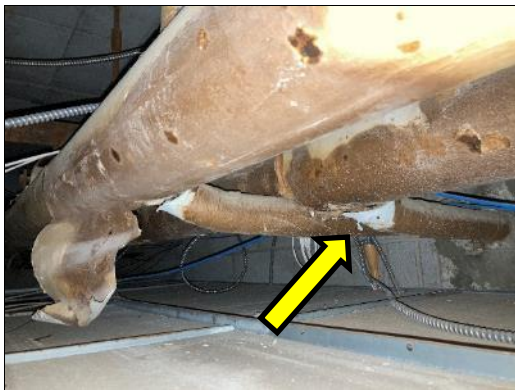


Photo 1

4.3 On-going Management and Maintenance

The following recommendations are made regarding on-going management and maintenance work involving the asbestos materials identified.

4.3.1 Asbestos

Maintain the Asbestos Management Program (AMP).

Perform a reassessment of asbestos materials on an annual basis.

Remove asbestos-containing materials (ACM) prior to alteration or maintenance work if ACM may be disturbed by the work. Follow appropriate asbestos precautions for the classification of work being performed.



Sample presumed ACM prior to alteration or maintenance work if the presumed ACM may be disturbed by the work.

Update the asbestos inventory report upon completion of any abatement and removal of asbestos-containing materials.

5.0 TERMS AND LIMITATIONS

This work was performed subject to the Terms and Limitations presented or referenced in the proposal for this project.

Information provided by Pinchin is intended for Client use only. Pinchin will not provide results or information to any party unless disclosure by Pinchin is required by law. Any use by a third party of reports or documents authored by Pinchin or any reliance by a third party on or decisions made by a third party based on the findings described in said documents, is the sole responsibility of such third parties. Pinchin accepts no responsibility for damages suffered by any third party as a result of decisions made or actions conducted. No other warranties are implied or expressed.

6.0 REFERENCES

The following legislation and documents were referenced in completing the assessment and this report:

1. Asbestos on Construction Projects and in Buildings and Repair Operations, Ontario Regulation 278/05.
2. Designated Substances, Ontario Regulation 490/09.

\\PIN-HAM-FS02\job\320000s\0320582.000 HWCDSB,Various2023Projects,ASB,CONS\0320582.001 HWCDSB,Various,ReportUpdates,ASB,REASSMT\Deliverables\Reassess\Our Lady of Assumption\Report\320582.001 OLA ACM Reassessment Report HWCDSB May 15 2023.docx

Template: Master Report for Asbestos Reassessment, HAZ, April 23, 2019

APPENDIX I
Asbestos Analytical Certificates



Pinchin Ltd. Asbestos Laboratory Certificate of Analysis

Project Name: Hamilton-Wentworth Catholic School Board
Our Lady of the Assumption, 55 Highway 20 South, Hamilton, ON

Project No.: 0272113.000

Prepared For: E. Balfour / M. Maiorana

Lab Reference No.: b235659

Analyst(s): J. Dacquel

Date Received: August 13, 2020 **# Samples submitted:** 11

Date Analyzed: August 21, 2020 **# Phases analyzed:** 18

Method of Analysis:

EPA 600/R-93/116 - Method for the Determination of Asbestos in Bulk Building Materials dated July, 1993

Bulk samples are checked visually and scanned under a stereomicroscope. Slides are prepared and observed under a Polarized Light Microscope (PLM) at magnifications of 40X, 100X or 400X as appropriate. Asbestos fibres are identified by a combination of morphology, colour, refractive index, extinction, sign of elongation, birefringence and dispersion staining colours. A visual estimate is made of the percentage of asbestos present. A reported concentration of less than (<) the regulatory threshold (see chart below) indicates the presence of confirmed asbestos in trace quantities, limited to only a few fibres or fibre bundles in an entire sample. This method complies with provincial regulatory requirements where applicable. Multiple phases within a sample are analyzed and reported separately.

All bulk samples submitted to this laboratory for asbestos analysis are retained for a minimum of three months. Samples may be retrieved, upon request, for re-examination at any time during that period.

The Pinchin Ltd. Mississauga asbestos laboratory is accredited by the National Institute of Standards and Technology, National Voluntary Laboratory Accreditation Program (NVLAP Lab Code 101270-0) for the 'EPA – 40 CFR Appendix E to Subpart E of Part 763, Interim Method of the Determination of Asbestos in Bulk Insulation Samples,' and the 'EPA 600/R-93/116: Method for the Determination of Asbestos in Bulk Building Materials'; and meets all requirements of ISO/IEC 17025:2005.

This report relates only to the items tested.

NOTE: *This test report may not be reproduced, except in full, without the written approval of the laboratory. The client may not use this report to claim product endorsement by NVLAP or any agency of the U.S. Government. This report is valid only when signed in blue ink by the analyst. Vinyl asbestos floor tiles contain very fine fibres of asbestos and may be missed by some laboratories using the PLM method. Internal verification studies performed by Pinchin indicate that the chance of missing asbestos in floor tiles is no higher than about 2%. The vinyl tile study and laboratory documentation on measurement uncertainty is available upon request. The analysis of dust samples by PLM cannot be used as an indicator of past or present airborne asbestos fibre levels.*



Pinchin Ltd. Asbestos Laboratory Certificate of Analysis

Project Name: Hamilton-Wentworth Catholic School Board
 Our Lady of the Assumption, 55 Highway 20 South, Hamilton, ON
Project No.: 0272113.000
Prepared For: E. Balfour / M. Maiorana

Lab Reference No.: b235659
Date Analyzed: August 21, 2020

BULK SAMPLE ANALYSIS

SAMPLE IDENTIFICATION	SAMPLE DESCRIPTION	% COMPOSITION (VISUAL ESTIMATE)	
		ASBESTOS	OTHER
S0007A Smooth plaster on ceiling, location 105	a) Homogeneous, grey, hard, cementitious, plaster base coat.	None Detected	Non-Fibrous Material > 75%
	b) Homogeneous, white, layered, hard, cementitious, plaster top coat.	None Detected	Non-Fibrous Material > 75%
Comments:	Phase a) is small in size. For more reliable results, a larger sample is required.		
S0007B Smooth plaster on ceiling, location 106	a) Homogeneous, grey, hard, cementitious, plaster base coat.	None Detected	Non-Fibrous Material > 75%
	b) Homogeneous, white, hard, cementitious, plaster top coat.	None Detected	Non-Fibrous Material > 75%
Comments:	Phase a) is small in size. For more reliable results, a larger sample is required.		
S0007C Smooth plaster on ceiling, location 107	a) Homogeneous, grey, hard, cementitious, plaster base coat.	Chrysotile < 0.5%	Non-Fibrous Material > 75%
	b) Homogeneous, white, hard, cementitious, plaster top coat.	None Detected	Non-Fibrous Material > 75%
Comments:	Phase a) is small in size. For more reliable results, a larger sample is required.		



Pinchin Ltd. Asbestos Laboratory Certificate of Analysis

Project Name: Hamilton-Wentworth Catholic School Board
 Our Lady of the Assumption, 55 Highway 20 South, Hamilton, ON
Project No.: 0272113.000
Prepared For: E. Balfour / M. Maiorana

Lab Reference No.: b235659
Date Analyzed: August 21, 2020

BULK SAMPLE ANALYSIS

SAMPLE IDENTIFICATION	SAMPLE DESCRIPTION	% COMPOSITION (VISUAL ESTIMATE)	
		ASBESTOS	OTHER
S0007D Smooth plaster on wall, location 108	2 Phases: a) Homogeneous, grey, hard, cementitious, plaster base coat.	None Detected	Non-Fibrous Material > 75%
	b) Homogeneous, white, hard, cementitious, plaster top coat.	None Detected	Non-Fibrous Material > 75%
Comments:	Synthetic fibres are present on the surface of this sample.		
S0007E Smooth plaster on wall, location 212	3 Phases: a) Homogeneous, grey, hard, cementitious, plaster base coat.	None Detected	Non-Fibrous Material > 75%
	b) Homogeneous, white, hard, cementitious, plaster top coat.	None Detected	Non-Fibrous Material > 75%
	c) Homogeneous, white, drywall joint compound.	None Detected	Non-Fibrous Material > 75%
S0008A Drywall joint compound on ceiling, location 132	Homogeneous, beige, layered, drywall joint compound.	Chrysotile 0.5-5%	Non-Fibrous Material > 75%
Comments:	Drywall is present on the surface of this sample.		
S0008B Drywall joint compound on ceiling, location 132			Not Analyzed
Comments:	Analysis was stopped due to a previous positive result.		



**Pinchin Ltd. Asbestos Laboratory
Certificate of Analysis**

Project Name: Hamilton-Wentworth Catholic School Board
Our Lady of the Assumption, 55 Highway 20 South, Hamilton, ON
Project No.: 0272113.000
Prepared For: E. Balfour / M. Maiorana
Lab Reference No.: b235659
Date Analyzed: August 21, 2020

BULK SAMPLE ANALYSIS

SAMPLE IDENTIFICATION	SAMPLE DESCRIPTION	% COMPOSITION (VISUAL ESTIMATE)	
		ASBESTOS	OTHER
S0008C Drywall joint compound on wall, location 200			Not Analyzed
Comments:	Analysis was stopped due to a previous positive result.		
S0009A Sweatwrap, location 201	2 Phases: a) Homogeneous, black, tar-impregnated, compressed, fibrous material. b) Homogeneous, beige, layered paper.	None Detected	Cellulose 50-75% Tar and other non-fibrous 25-50%
		None Detected	Cellulose > 75% Non-Fibrous Material 0.5-5%
S0009B Sweatwrap, location 201	2 Phases: a) Homogeneous, black, tar-impregnated, compressed, fibrous material. b) Homogeneous, beige, layered paper.	None Detected	Cellulose 50-75% Tar and other non-fibrous 25-50%
		None Detected	Cellulose > 75% Non-Fibrous Material 0.5-5%
S0009C Sweatwrap, location 201	2 Phases: a) Homogeneous, black, tar-impregnated, compressed, fibrous material. b) Homogeneous, beige, layered paper.	None Detected	Cellulose 50-75% Tar and other non-fibrous 25-50%
		None Detected	Cellulose > 75% Non-Fibrous Material 0.5-5%

Reviewed by:

Reporting Analyst:



Analyzed by: *[Signature]*
 Reviewed by: *[Signature]*
 Report Sent by: *[Signature]*

MEMBER OF
PG
 THE PINCHIN GROUP

18

Instructions:

**Pinchin Ltd. - Asbestos Laboratory
 Internal Asbestos Bulk Sample Chain of Custody**

Client Name:	Hamilton-Wentworth Catholic School Board	Project Address:	55 Highway 20 South, Hamilton, Ontario
Portfolio/Building No:	Our Lady of the Assumption	Pinchin File:	272113
Submitted by:	Emily Balfour	Email:	ebalfour@pinchin.com
CC Results to:	Michael Maiorana	CC Email:	mmaiorana@pinchin.com
Invoice to:	Accounts Payable	Invoice Email:	ap@pinchin.com
Date Submitted:	August 12 2020	Required by:	August 19 2020
# of Samples:	11	Priority:	5 Day Turnaround
Year of Building Construction (Mandatory Field):	1962		
Do NOT Stop on Positive (Sample Numbers):			
Pinchin Group Company (Mandatory Field):	Pinchin		

To be Completed by Lab Personnel Only:

Lab Reference #:	b235659	Time:	24 hour clock		
Received by:	DS	Date:	Month	Day	Year
Name(s) of Analyst(s):	J. Maiorana		AUG. 31, 2020		

Sample Prefix	Sample No.	Sample Suffix	Sample Description/Location (Mandatory)
	S0007	A	Smooth plaster on ceiling, location 105 a.) N/D b.) N/D
	S0007	B	Smooth plaster on ceiling, location 106 a.) N/D b.) N/D
	S0007	C	Smooth plaster on ceiling, location 107 a.) N/A CH < 0.5% b.) N/D
	S0007	D	Smooth plaster on wall, location 108 a.) N/D b.) N/D
	S0007	E	Smooth plaster on wall, location 212 a.) N/D b.) N/D c.) N/D
	S0008	A	Drywall joint compound on ceiling, location 132 CH 0.5-5%

12

BACK

APPENDIX II
Location List

Client: Hamilton-Wentworth Catholic District Sch
 Building Name: Old Our Lady of the Assumption
 Survey Date: 2020-08-12
 Building Phases: A: 1962

Site: 55 Highway 20, Stoney Creek, ON
 Last Re-Assessment: 2023-01-23

Location No.	Name or Description	Area ft ²	Floor No.	Bldg. Phase	Notes
1	Presumed ACM	0		A	Where present, these materials are assumed to contain asbestos until otherwise proven by sampling and analysis.
100	Stage	0		A	
101	Gymnasium	0		A	
102	Corridor	0		A	
103	Gym Storage	0		A	
104	Foyer	0		A	
105	Kitchen	0		A	
106	Girl's Washroom	0		A	
107	Boy's Washroom	0		A	
108	Foyer	0		A	
109	Kindergarten	0		A	
110	Washroom	0		A	
111	Washroom	0		A	
112	Entrance	0		A	
113	Kindergarten 2	0		A	
114	Boiler Room	0		A	
115	Custodian Washroom	0		A	
116	Custodian	0		A	
117	Vestibule	0		A	
118	Closet	0		A	
119	Conference Room	0		A	
120	Front Entrance	0		A	
121	Front Entrance	0		A	
122	Unknown	0		A	
123	Closet	0		A	
124	Main Office	0		A	
125	Girl's Washroom	0		A	
126	Boy's Washroom	0		A	
127	Classroom 3	0		A	
128	Classroom 4	0		A	
129	Classroom 5	0		A	
130	Side Entrance	0		A	
131	Storage	0		A	
132	Stairwell Storage	0		A	
200	Special Ed 7	0		A	
201	Corridor	0		A	
202	Classroom 6	0		A	
203	Classroom 8	0		A	
204	Classroom 9	0		A	
205	Storage	0		A	
206	Storage	0		A	
207	Foyer and Room	0		A	
209	Washroom	0		A	
210	Workroom	0		A	
211	Stairwell	0		A	
212	Staff Room	0		A	
213	Washroom	0		A	
214	Classroom 12	0		A	
215	Supply Room	0		A	
216	Classroom 13	0		A	
217	Stairwell	0		A	
218	Stairwell	0		A	

APPENDIX III
Hazardous Materials Summary / Sample Log Report

Client: Hamilton-Wentworth Catholic District Sch

Site: 55 Highway 20, Stoney Creek, ON

Building Name: Old Our Lady of the Assumption

Survey Date: 2020-08-12

HAZMAT	Sample No	System/Component/Material/Sample Description	Locations	Bldg. Phase	LF	SF	EA	%	Type	Positive	Friability
Asbestos	V0001	Ceiling Acoustic Tile Ceiling Tiles (lay-in) 2x4 Medium Fissure Random Pinhole (mte Sample 38313-100-s01)	102,201	A	0	0	0	0	None Detected	No	
Asbestos	V0002	Ceiling Acoustic Tile Ceiling Tiles (lay-in) 2x4 Textured Pinhole (mte Sample 38313-100-s02)	104,130,212	A	0	0	0	0	None Detected	No	
Asbestos	V0003	Ceiling Acoustic Tile Ceiling Tiles (lay-in) 2x4 Short Fissure Random Pinhole (mte Sample 38313-100-s03)	115,116	A	0	0	0	0	None Detected	No	
Asbestos	V0004	Floor Vinyl Floor Tile 9x9 Red With White Streak (mte Sample 38981-100-s03)	116,117,202,209	A	0	0	0	100	Chrysotile	Yes	NF
Asbestos	V0005	Floor Vinyl Floor Tile 12x12 Grey Dense Fleck (mte 38981-100-s02)	124,127,204	A	0	0	0	0	None Detected	No	
Asbestos	V0006	Piping Parging Cement (mte Sample 38981-100-s06)	100,102,103,127,201,215	A	0	0	94	0	Chrysotile	Yes	F
Asbestos	S0007 ABCDE	Ceiling, Wall, Ceiling, Wall Bulkhead Plaster Smooth	105,106,107,108,110,111,131,212,213,217	A	0	0	0	0	Chrysotile	No	
Asbestos	S0008 ABC	Ceiling, Wall Drywall And Joint Compound	132,200	A	0	0	0	100	Chrysotile	Yes	NF
Asbestos	S0009 ABC	Piping Sweatwrap	201	A	30	0	0	0	None Detected	No	
Asbestos	V9500	Ceiling Acoustic Tile Ceiling Tiles (lay-in) 2x4 Short Fissure Random Pinhole	101	A	0	0	0	100	Presumed Asbestos	Yes	PF
Asbestos	V9500	Floor Mastic	116,117,124,127,204,209,218	A	0	0	0	100	Presumed Asbestos	Yes	NF
Asbestos	V9500	Floor Vinyl Floor Tile And Mastic 12x12 Aqua Dense Fleck, 12x12 Beige With Brown And White Streak, 12x12 Beige With Brown Streak, 12x12 Black Dense Fleck, 12x12 Cream With Rose Fleck, 12x12 Grey With White And Black Fleck, 12x12 Salmon, 12x12 Tan With White Streak, 12x12 White With Black And Grey Fleck, 12x12 White With Black Streak, 9x9 Blue With White Streak, 9x9 Blue With White Streaks, 9x9 Brown With White Fleck, 9x9 Grey With White And Black Fleck, 9x9 Tan With White Streak	100,101,103,109,113,119,123,128,200,201,202,203,207,210,211,212,214,215,216,217	A	0	0	0	100	Presumed Asbestos	Yes	NF
Asbestos	V9500	Other Sink Mastic, White Undercoating, Undercoating	207,212	A	0	0	2	0	Presumed Asbestos	Yes	NF
Asbestos	V9500	Other N/a Roofing Felts And Tar, Mastics, Floor Levelling Compound, Ceramic Tile Setting Compound, Electrical Components, Mechanical Packing, Ropes And Gaskets,	1	A	0	0	0	100	Presumed Asbestos	Yes	NF

HAZMAT	Sample No	System/Component/Material/Sample Description	Locations	Bldg. Phase	LF	SF	EA	%	Type	Positive	Friability
		Vermiculite, Adhesives And Duct Mastics, Caulking And Putties, Fibre-reinforced Paints And Coatings, Paper Products, Soffit And Fascia Boards, Fire Resistant Doors, Stucco, Plaster Or Other Cementitious Parge Coatings, Vibration Dampers On Hvac Equipment, Ropes And Gaskets In Cast-iron Bell And Spigot Joints, Sealants On Pipe Threads									
Asbestos	V9500	Other Light Fixture Paper Heat Shield	117,207,209	A	0	0	3	0	Presumed Asbestos	Yes	NF
Asbestos	V9500	Wall Drywall And Joint Compound Partition Wall	127	A	0	0	0	100	Presumed Asbestos	Yes	NF
Asbestos	V0000	Ceiling Acoustic Tile Ceiling Tiles (lay-in) 2x4 Fibreglass	109,112,117,118,122,130,207,209	A	0	0	0	0	Non Asbestos	No	
Asbestos	V0000	Floor Vinyl Floor Tile 12x12 Beige With Dense Fleck (installed 2014)	218	A	0	0	0	0	Non Asbestos	No	
Asbestos	V0000	Floor Vinyl Floor Tile And Mastic 12x12 Beige Dense Fleck (installed 2014)	129	A	0	0	0	0	Non Asbestos	No	

Legend:

Sample number		Units		
S####	Asbestos sample collected	SF	Square feet	NF Non Friable material.
L####	Paint sample collected	LF	Linear feet	F Friable material
P####	PCB sample collected	EA	Each	PF Potentially Friable material
M####	Mould sample collected	%	Percentage	
V####	Material visually similar to numbered sample collected			
V0000	Known non Hazardous Material			
V9000	Material is visually identified as Hazardous Material			
V9500	Material is presumed to be Hazardous Material			
[Loc. No.]	Abated Material			

APPENDIX IV
All Data Report

Client: Hamilton-Wentworth Catholic District Sch
Location: #1 : Presumed ACM
Survey Date: 2020-08-12

Site: Elementary
Floor: Basement (0)

Building Name: Old Our Lady of the Assumption
Room #:
Last Re-Assessment: 2023-01-23

Area (sqft): 0

ASBESTOS																	
System	Component	Material	Item	Covering	A*	V*	AP*	Good	Fair	Poor	Unit	Sample	Asbestos Type	Amount	Hazard	Friable	
Other		N/A, Roofing felts and tar, mastics, Floor levelling compound, Ceramic tile setting compound, Electrical components, Mechanical packing, ropes and gaskets, Vermiculite, Adhesives and duct mastics, Caulking and putties, Fibre-reinforced paints and coatings, Paper products, Soffit and fascia boards, Fire resistant doors, Stucco, plaster or other cementitious parge coatings, Vibration dampers on HVAC equipment, Ropes and gaskets in cast-iron bell and spigot joints, Sealants on pipe threads			D	N		100(7)				%	V9500	Presumed Asbestos		Presumed Asbestos	NF

Where present, these materials are assumed to contain asbestos until otherwise proven by sampling and analysis.

Client: Hamilton-Wentworth Catholic District Sch
Location: #100 : Stage
Survey Date: 2020-08-12

Site: Elementary
Floor: Basement (0)

Building Name: Old Our Lady of the Assumption
Room #:
Last Re-Assessment: 2023-01-23

Area (sqft): 0

ASBESTOS																	
System	Component	Material	Item	Covering	A*	V*	AP*	Good	Fair	Poor	Unit	Sample	Asbestos Type	Amount	Hazard	Friable	
Duct		Not Insulated			C	Y											
Floor		Wood			A	Y											
Floor		Vinyl Floor Tile and Mastic, 9x9 brown with white fleck			A	Y		100(7)				%	V9500	Presumed Asbestos		Presumed Asbestos	NF
Piping		Parging Cement	Fitting		C	Y		7(7)				EA	V0006	Chrysotile	50-75%	Confirmed Asbestos	F
Structure	Deck	Concrete (poured)			C	Y											
Wall		Masonry, concrete block			A	Y											

Client: Hamilton-Wentworth Catholic District Sch
Location: #101 : Gymnasium
Survey Date: 2020-08-12

Site: Elementary
Floor: Basement (0)

Building Name: Old Our Lady of the Assumption
Room #:
Last Re-Assessment: 2023-01-23

Area (sqft): 0

ASBESTOS																
System	Component	Material	Item	Covering	A*	V*	AP*	Good	Fair	Poor	Unit	Sample	Asbestos Type	Amount	Hazard	Friable
Ceiling ¹	Acoustic Tile	Ceiling Tiles (lay-in), 2x4 short fissure random pinhole			C	Y		100(7)			%	V9500	Presumed Asbestos		Presumed Asbestos	PF
Floor		Vinyl Floor Tile and Mastic, 9x9 brown with white fleck			A	Y		100(7)			%	V9500	Presumed Asbestos		Presumed Asbestos	NF
Floor		Vinyl Floor Tile and Mastic, 12x12 cream with rose fleck			A	Y		100(7)			%	V9500	Presumed Asbestos		Presumed Asbestos	NF
Structure		Concrete (poured)			C	Y										
Wall		Masonry, concrete block			A	Y										

1 - installed vertically around beams

Client: Hamilton-Wentworth Catholic District Sch
Location: #102 : Corridor
Survey Date: 2020-08-12

Site: Elementary
Floor: Basement (0)

Building Name: Old Our Lady of the Assumption
Room #:
Last Re-Assessment: 2023-01-23

Area (sqft): 0

ASBESTOS																
System	Component	Material	Item	Covering	A*	V*	AP*	Good	Fair	Poor	Unit	Sample	Asbestos Type	Amount	Hazard	Friable
Ceiling	Acoustic Tile	Ceiling Tiles (lay-in), 2x4 medium fissure random pinhole			C	Y						V0001	None Detected	N.D.	None	
Floor		Terrazzo			A	Y										
Piping		Parging Cement	Fitting		C	N		49(7)	8(7)	1(4)	EA	V0006	Chrysotile	50-75%	Confirmed Asbestos	F
Wall		Masonry, concrete block			A	Y										

Client: Hamilton-Wentworth Catholic District Sch
Location: #103 : Gym Storage
Survey Date: 2020-08-12

Site: Elementary
Floor: Basement (0)

Building Name: Old Our Lady of the Assumption
Room #:
Last Re-Assessment: 2023-01-23

Area (sqft): 0

ASBESTOS																
System	Component	Material	Item	Covering	A*	V*	AP*	Good	Fair	Poor	Unit	Sample	Asbestos Type	Amount	Hazard	Friable
Ceiling		Masonry, concrete block			C	Y										
Floor		Vinyl Floor Tile and Mastic, 12x12 cream with rose fleck			A	Y		100(7)			%	V9500	Presumed Asbestos		Presumed Asbestos	NF
Piping		Parging Cement	Fitting		C	N		18(7)			EA	V0006	Chrysotile	50-75%	Confirmed Asbestos	F
Wall		Masonry, concrete block			A	Y										

Client: Hamilton-Wentworth Catholic District Sch
Location: #104 : Foyer
Survey Date: 2020-08-12

Site: Elementary
Floor: Basement (0)

Building Name: Old Our Lady of the Assumption
Room #:
Last Re-Assessment: 2023-01-23

Area (sqft): 0

ASBESTOS																
System	Component	Material	Item	Covering	A*	V*	AP*	Good	Fair	Poor	Unit	Sample	Asbestos Type	Amount	Hazard	Friable
Ceiling	Acoustic Tile	Ceiling Tiles (lay-in), 2x4 textured pinhole			C	Y						V0002	None Detected	N.D.	None	
Floor		Terrazzo			A	Y										
Wall		Masonry, concrete block			A	Y										

Client: Hamilton-Wentworth Catholic District Sch
Location: #105 : Kitchen
Survey Date: 2020-08-12

Site: Elementary
Floor: Basement (0)

Building Name: Old Our Lady of the Assumption
Room #:
Last Re-Assessment: 2023-01-23

Area (sqft): 0

ASBESTOS																
System	Component	Material	Item	Covering	A*	V*	AP*	Good	Fair	Poor	Unit	Sample	Asbestos Type	Amount	Hazard	Friable
Ceiling		Plaster, Smooth			C	Y						S0007A	Chrysotile	<0.5%	None	
Floor		Terrazzo			A	Y										
Wall		Plaster, Smooth			A	Y						V0007	Chrysotile	<0.5%	None	
Wall		Masonry, concrete block			A	Y										

Client: Hamilton-Wentworth Catholic District Sch
Location: #106 : Girl's Washroom
Survey Date: 2020-08-12

Site: Elementary
Floor: Basement (0)

Building Name: Old Our Lady of the Assumption
Room #:
Last Re-Assessment: 2023-01-23

Area (sqft): 0

ASBESTOS																
System	Component	Material	Item	Covering	A*	V*	AP*	Good	Fair	Poor	Unit	Sample	Asbestos Type	Amount	Hazard	Friable
Ceiling		Plaster, Smooth			C	Y						S0007B	Chrysotile	<0.5%	None	
Floor		Terrazzo			A	Y										
Wall		Plaster, Smooth			A	Y						V0007	Chrysotile	<0.5%	None	
Wall		Masonry, concrete block			A	Y										

Client: Hamilton-Wentworth Catholic District Sch
Location: #107 : Boy's Washroom
Survey Date: 2020-08-12

Site: Elementary
Floor: Basement (0)

Building Name: Old Our Lady of the Assumption
Room #:
Last Re-Assessment: 2023-01-23

Area (sqft): 0

ASBESTOS																
System	Component	Material	Item	Covering	A*	V*	AP*	Good	Fair	Poor	Unit	Sample	Asbestos Type	Amount	Hazard	Friable
Ceiling		Plaster, Smooth			C	Y						S0007C	Chrysotile	<0.5%	None	
Floor		Terrazzo			A	Y										
Wall		Plaster, Smooth			A	Y						V0007	Chrysotile	<0.5%	None	
Wall		Masonry, concrete block			A	Y										

Client: Hamilton-Wentworth Catholic District Sch
Location: #108 : Foyer
Survey Date: 2020-08-12

Site: Elementary
Floor: Basement (0)

Building Name: Old Our Lady of the Assumption
Room #:
Last Re-Assessment: 2023-01-23

Area (sqft): 0

ASBESTOS																
System	Component	Material	Item	Covering	A*	V*	AP*	Good	Fair	Poor	Unit	Sample	Asbestos Type	Amount	Hazard	Friable
Ceiling		Masonry, concrete block			C	Y										
Floor		Terrazzo			A	Y										
Wall		Plaster, Smooth, above door			C	Y						S0007D	Chrysotile	<0.5%	None	
Wall		Masonry, concrete block			A	Y										

Client: Hamilton-Wentworth Catholic District Sch
Location: #109 : Kindergarten
Survey Date: 2020-08-12

Site: Elementary
Floor: Basement (0)

Building Name: Old Our Lady of the Assumption
Room #:
Last Re-Assessment: 2023-01-23

Area (sqft): 0

ASBESTOS																
System	Component	Material	Item	Covering	A*	V*	AP*	Good	Fair	Poor	Unit	Sample	Asbestos Type	Amount	Hazard	Friable
Ceiling	Acoustic Tile	Ceiling Tiles (lay-in), 2x4 fibreglass			C	Y						V0000	Non-Asbestos		None	
Ceiling		Masonry, concrete block			C	Y										
Floor		Vinyl Floor Tile and Mastic, 12x12 cream with rose fleck			A	Y		100(7)			%	V9500	Presumed Asbestos		Presumed Asbestos	NF
Floor		Vinyl Floor Tile and Mastic, 12x12 black dense fleck			A	Y		100(7)			%	V9500	Presumed Asbestos		Presumed Asbestos	NF
Floor		Vinyl Floor Tile and Mastic, 12x12 beige with brown and white streak			A	Y		100(7)			%	V9500	Presumed Asbestos		Presumed Asbestos	NF
Wall		Masonry, concrete block			A	Y										

Client: Hamilton-Wentworth Catholic District Sch
Location: #110 : Washroom
Survey Date: 2020-08-12

Site: Elementary
Floor: Basement (0)

Building Name: Old Our Lady of the Assumption
Room #:
Last Re-Assessment: 2023-01-23

Area (sqft): 0

ASBESTOS																
System	Component	Material	Item	Covering	A*	V*	AP*	Good	Fair	Poor	Unit	Sample	Asbestos Type	Amount	Hazard	Friable
Ceiling		Plaster			C	Y						V0007	Chrysotile	<0.5%	None	
Floor		Terrazzo			A	Y										
Wall		Plaster			A	Y						V0007	Chrysotile	<0.5%	None	
Wall		Masonry, concrete block			A	Y										

Client: Hamilton-Wentworth Catholic District Sch
Location: #111 : Washroom
Survey Date: 2020-08-12

Site: Elementary
Floor: Basement (0)

Building Name: Old Our Lady of the Assumption
Room #:
Last Re-Assessment: 2023-01-23

Area (sqft): 0

ASBESTOS																
System	Component	Material	Item	Covering	A*	V*	AP*	Good	Fair	Poor	Unit	Sample	Asbestos Type	Amount	Hazard	Friable
Ceiling		Plaster			C	Y						V0007	Chrysotile	<0.5%	None	
Floor		Terrazzo			A	Y										
Wall		Plaster			A	Y						V0007	Chrysotile	<0.5%	None	
Wall		Masonry, concrete block			A	Y										

Client: Hamilton-Wentworth Catholic District Sch
Location: #112 : Entrance
Survey Date: 2020-08-12

Site: Elementary
Floor: Basement (0)

Building Name: Old Our Lady of the Assumption
Room #:
Last Re-Assessment: 2023-01-23

Area (sqft): 0

ASBESTOS																
System	Component	Material	Item	Covering	A*	V*	AP*	Good	Fair	Poor	Unit	Sample	Asbestos Type	Amount	Hazard	Friable
Ceiling	Acoustic Tile	Ceiling Tiles (lay-in), 2x4 fibreglass			C	Y						V0000	Non-Asbestos		None	
Floor		Ceramic Tiles			A	Y										
Floor		Terrazzo			A	Y										
Wall		Masonry, concrete block			A	Y										

Client: Hamilton-Wentworth Catholic District Sch
Location: #113 : Kindergarten 2
Survey Date: 2020-08-12

Site: Elementary
Floor: Basement (0)

Building Name: Old Our Lady of the Assumption
Room #:
Last Re-Assessment: 2023-01-23

Area (sqft): 0

ASBESTOS																
System	Component	Material	Item	Covering	A*	V*	AP*	Good	Fair	Poor	Unit	Sample	Asbestos Type	Amount	Hazard	Friable
Ceiling		Masonry, concrete block			C	Y										
Floor		Vinyl Floor Tile and Mastic, 12x12 cream with rose fleck			A	Y		100(7)			%	V9500	Presumed Asbestos		Presumed Asbestos	NF
Floor		Vinyl Floor Tile and Mastic, 12x12 black dense fleck			A	Y		100(7)			%	V9500	Presumed Asbestos		Presumed Asbestos	NF
Floor		Vinyl Floor Tile and Mastic, 12x12 beige with brown and white streak			A	Y		100(7)			%	V9500	Presumed Asbestos		Presumed Asbestos	NF
Other	Sink	Mastic, Gold, undercoating			A	N		1			EA	V9500	[None]		[Abated]	
Wall		Masonry, concrete block			A	Y										

Client: Hamilton-Wentworth Catholic District Sch
Location: #114 : Boiler Room
Survey Date: 2020-08-12

Site: Elementary
Floor: Basement (0)

Building Name: Old Our Lady of the Assumption
Room #:
Last Re-Assessment: 2023-01-23

Area (sqft): 0

ASBESTOS																
System	Component	Material	Item	Covering	A*	V*	AP*	Good	Fair	Poor	Unit	Sample	Asbestos Type	Amount	Hazard	Friable
Ceiling		Masonry, concrete block			C	Y										
Floor		Concrete (poured)			A	Y										
Piping		Fibreglass	Insulation		C	Y										
Wall		Masonry, concrete block			A	Y										

Client: Hamilton-Wentworth Catholic District Sch
Location: #115 : Custodian Washroom
Survey Date: 2020-08-12

Site: Elementary
Floor: Basement (0)

Building Name: Old Our Lady of the Assumption
Room #:
Last Re-Assessment: 2023-01-23

Area (sqft): 0

ASBESTOS																
System	Component	Material	Item	Covering	A*	V*	AP*	Good	Fair	Poor	Unit	Sample	Asbestos Type	Amount	Hazard	Friable
Ceiling	Acoustic Tile	Ceiling Tiles (lay-in), 2x4 short fissure random pinhole			C	Y						V0003	None Detected	N.D.	None	
Floor		Terrazzo			A	Y										
Wall		Masonry, concrete block			A	Y										

Client: Hamilton-Wentworth Catholic District Sch
Location: #116 : Custodian
Survey Date: 2020-08-12

Site: Elementary
Floor: Basement (0)

Building Name: Old Our Lady of the Assumption
Room #:
Last Re-Assessment: 2023-01-23

Area (sqft): 0

ASBESTOS																
System	Component	Material	Item	Covering	A*	V*	AP*	Good	Fair	Poor	Unit	Sample	Asbestos Type	Amount	Hazard	Friable
Ceiling	Acoustic Tile	Ceiling Tiles (lay-in), 2x4 short fissure random pinhole			C	Y						V0003	None Detected	N.D.	None	
Ceiling		Masonry, concrete block			C	Y										
Floor		Mastic		Vinyl Floor Tile	D	N		100(7)			%	V9500	Presumed Asbestos		Presumed Asbestos	NF
Floor		Vinyl Floor Tile, 9x9 red with white streak			A	Y		100(7)			%	V0004	Chrysotile	0.5-5%	Confirmed Asbestos	NF
Wall		Masonry, concrete block			A	Y										

Client: Hamilton-Wentworth Catholic District Sch
Location: #117 : Vestibule
Survey Date: 2020-08-12

Site: Elementary
Floor: Basement (0)

Building Name: Old Our Lady of the Assumption
Room #:
Last Re-Assessment: 2023-01-23

Area (sqft): 0

ASBESTOS																
System	Component	Material	Item	Covering	A*	V*	AP*	Good	Fair	Poor	Unit	Sample	Asbestos Type	Amount	Hazard	Friable
Ceiling	Acoustic Tile	Ceiling Tiles (lay-in), 2x4 fibreglass			C	Y						V0000	Non-Asbestos		None	
Floor		Mastic		Vinyl Floor Tile	D	N		100(7)			%	V9500	Presumed Asbestos		Presumed Asbestos	NF
Floor		Vinyl Floor Tile, 9x9 red with white streak			A	Y		100(7)			%	V0004	Chrysotile	0.5-5%	Confirmed Asbestos	NF
Other	Light Fixture	Paper, heat shield			C	Y		1(7)			EA	V9500	Presumed Asbestos		Presumed Asbestos	NF
Wall		Masonry, concrete block			A	Y										

Client: Hamilton-Wentworth Catholic District Sch
Location: #118 : Closet
Survey Date: 2020-08-12

Site: Elementary
Floor: Basement (0)

Building Name: Old Our Lady of the Assumption
Room #:
Last Re-Assessment: 2023-01-23

Area (sqft): 0

ASBESTOS																
System	Component	Material	Item	Covering	A*	V*	AP*	Good	Fair	Poor	Unit	Sample	Asbestos Type	Amount	Hazard	Friable
Ceiling	Acoustic Tile	Ceiling Tiles (lay-in), 2x4 fibreglass			C	Y						V0000	Non-Asbestos		None	
Floor		Terrazzo			A	Y										
Wall		Masonry, concrete block			A	Y										

Client: Hamilton-Wentworth Catholic District Sch
Location: #119 : Conference Room
Survey Date: 2020-08-12

Site: Elementary
Floor: Basement (0)

Building Name: Old Our Lady of the Assumption
Room #:
Last Re-Assessment: 2023-01-23

Area (sqft): 0

ASBESTOS																
System	Component	Material	Item	Covering	A*	V*	AP*	Good	Fair	Poor	Unit	Sample	Asbestos Type	Amount	Hazard	Friable
Ceiling		Masonry, concrete block			C	Y										
Floor		Vinyl Floor Tile and Mastic, 9x9 blue with white streak			A	Y		100(7)			%	V9500	Presumed Asbestos		Presumed Asbestos	NF
Wall		Masonry, concrete block			A	Y										

Client: Hamilton-Wentworth Catholic District Sch
Location: #120 : Front Entrance
Survey Date: 2020-08-12

Site: Elementary
Floor: Basement (0)

Building Name: Old Our Lady of the Assumption
Room #:
Last Re-Assessment: 2023-01-23

Area (sqft): 0

ASBESTOS																
System	Component	Material	Item	Covering	A*	V*	AP*	Good	Fair	Poor	Unit	Sample	Asbestos Type	Amount	Hazard	Friable
Ceiling		Masonry, concrete block			C	Y										
Floor		Terrazzo			A	Y										
Wall		Masonry, concrete block			A	Y										

Client: Hamilton-Wentworth Catholic District Sch
Location: #121 : Front Entrance
Survey Date: 2020-08-12

Site: Elementary
Floor: Basement (0)

Building Name: Old Our Lady of the Assumption
Room #:
Last Re-Assessment: 2023-01-23

Area (sqft): 0

ASBESTOS																
System	Component	Material	Item	Covering	A*	V*	AP*	Good	Fair	Poor	Unit	Sample	Asbestos Type	Amount	Hazard	Friable
Ceiling		Masonry, concrete block			C	Y										
Floor		Terrazzo			A	Y										
Wall		Masonry, concrete block			A	Y										

Client: Hamilton-Wentworth Catholic District Sch
Location: #122 : Unknown
Survey Date: 2020-08-12

Site: Elementary
Floor: Basement (0)

Building Name: Old Our Lady of the Assumption
Room #:
Last Re-Assessment: 2023-01-23

Area (sqft): 0

ASBESTOS																
System	Component	Material	Item	Covering	A*	V*	AP*	Good	Fair	Poor	Unit	Sample	Asbestos Type	Amount	Hazard	Friable
Ceiling	Acoustic Tile	Ceiling Tiles (lay-in), 2x4 fibreglass			C	Y						V0000	Non-Asbestos		None	
Floor		Terrazzo			A	Y										
Wall		Masonry, concrete block			A	Y										

Client: Hamilton-Wentworth Catholic District Sch
Location: #123 : Closet
Survey Date: 2020-08-12

Site: Elementary
Floor: Basement (0)

Building Name: Old Our Lady of the Assumption
Room #:
Last Re-Assessment: 2023-01-23

Area (sqft): 0

ASBESTOS																
System	Component	Material	Item	Covering	A*	V*	AP*	Good	Fair	Poor	Unit	Sample	Asbestos Type	Amount	Hazard	Friable
Ceiling		Masonry, concrete block			C	Y										
Floor		Vinyl Floor Tile and Mastic, 9x9 blue with white streak			A	Y		100(7)			%	V9500	Presumed Asbestos		Presumed Asbestos	NF
Wall		Masonry, concrete block			A	Y										

Client: Hamilton-Wentworth Catholic District Sch
Location: #124 : Main Office
Survey Date: 2020-08-12

Site: Elementary
Floor: Basement (0)

Building Name: Old Our Lady of the Assumption
Room #:
Last Re-Assessment: 2023-01-23

Area (sqft): 0

ASBESTOS																
System	Component	Material	Item	Covering	A*	V*	AP*	Good	Fair	Poor	Unit	Sample	Asbestos Type	Amount	Hazard	Friable
Ceiling		Masonry, concrete block			C	Y										
Floor		Mastic		Vinyl Floor Tile	D	N		100(7)			%	V9500	Presumed Asbestos		Presumed Asbestos	NF
Floor		Vinyl Floor Tile, 12x12 grey dense fleck										V0005	None Detected	N.D.	None	
Wall		Masonry, concrete block			A	Y										

Client: Hamilton-Wentworth Catholic District Sch
Location: #125 : Girl's Washroom
Survey Date: 2020-08-12

Site: Elementary
Floor: Basement (0)

Building Name: Old Our Lady of the Assumption
Room #:
Last Re-Assessment: 2023-01-23

Area (sqft): 0

ASBESTOS																
System	Component	Material	Item	Covering	A*	V*	AP*	Good	Fair	Poor	Unit	Sample	Asbestos Type	Amount	Hazard	Friable
Ceiling		Masonry, concrete block			C	Y										
Floor		Terrazzo			A	Y										
Wall		Masonry, concrete block			A	Y										

Client: Hamilton-Wentworth Catholic District Sch
Location: #126 : Boy's Washroom
Survey Date: 2020-08-12

Site: Elementary
Floor: Basement (0)

Building Name: Old Our Lady of the Assumption
Room #:
Last Re-Assessment: 2023-01-23

Area (sqft): 0

ASBESTOS																
System	Component	Material	Item	Covering	A*	V*	AP*	Good	Fair	Poor	Unit	Sample	Asbestos Type	Amount	Hazard	Friable
Ceiling		Masonry, concrete block			C	Y										
Floor		Terrazzo			A	Y										
Wall		Masonry, concrete block			A	Y										

Client: Hamilton-Wentworth Catholic District Sch
Location: #127 : Classroom 3
Survey Date: 2020-08-12

Site: Elementary
Floor: Basement (0)

Building Name: Old Our Lady of the Assumption
Room #:
Last Re-Assessment: 2023-01-23

Area (sqft): 0

ASBESTOS																
System	Component	Material	Item	Covering	A*	V*	AP*	Good	Fair	Poor	Unit	Sample	Asbestos Type	Amount	Hazard	Friable
Ceiling		Masonry, concrete block			C	Y										
Floor		Mastic		Vinyl Floor Tile	D	N		100(7)			%	V9500	Presumed Asbestos		Presumed Asbestos	NF
Floor		Vinyl Floor Tile, 12x12 grey dense fleck										V0005	None Detected	N.D.	None	
Piping		Parging Cement	Fitting		C	Y		4(7)			EA	V0006	Chrysotile	50-75%	Confirmed Asbestos	F
Wall		Drywall and joint compound, partition wall			A	Y		100(7)			%	V9500	Presumed Asbestos		Presumed Asbestos	NF
Wall		Masonry, concrete block			A	Y										

Client: Hamilton-Wentworth Catholic District Sch
Location: #128 : Classroom 4
Survey Date: 2020-08-12

Site: Elementary
Floor: Basement (0)

Building Name: Old Our Lady of the Assumption
Room #:
Last Re-Assessment: 2023-01-23

Area (sqft): 0

ASBESTOS																
System	Component	Material	Item	Covering	A*	V*	AP*	Good	Fair	Poor	Unit	Sample	Asbestos Type	Amount	Hazard	Friable
Ceiling		Masonry, concrete block			C	Y										
Floor		Vinyl Floor Tile and Mastic, 12x12 black dense fleck			A	Y		100(7)			%	V9500	Presumed Asbestos		Presumed Asbestos	NF
Floor		Vinyl Floor Tile and Mastic, 12x12 white with black streak			A	Y		100(7)			%	V9500	Presumed Asbestos		Presumed Asbestos	NF
Floor		Vinyl Floor Tile and Mastic, 12x12 white with black and grey fleck			A	Y		100(7)			%	V9500	Presumed Asbestos		Presumed Asbestos	NF
Wall		Masonry, concrete block			A	Y										

Client: Hamilton-Wentworth Catholic District Sch
Location: #129 : Classroom 5
Survey Date: 2020-08-12

Site: Elementary
Floor: Basement (0)

Building Name: Old Our Lady of the Assumption
Room #:
Last Re-Assessment: 2023-01-23

Area (sqft): 0

ASBESTOS																
System	Component	Material	Item	Covering	A*	V*	AP*	Good	Fair	Poor	Unit	Sample	Asbestos Type	Amount	Hazard	Friable
Ceiling		Masonry, concrete block			C	Y										
Floor		Vinyl Floor Tile and Mastic, 12x12 beige dense fleck (installed 2014)			A	Y						V0000	Non-Asbestos		None	
Wall		Masonry, concrete block			A	Y										

Client: Hamilton-Wentworth Catholic District Sch
Location: #130 : Side Entrance
Survey Date: 2020-08-12

Site: Elementary
Floor: Basement (0)

Building Name: Old Our Lady of the Assumption
Room #:
Last Re-Assessment: 2023-01-23

Area (sqft): 0

ASBESTOS																
System	Component	Material	Item	Covering	A*	V*	AP*	Good	Fair	Poor	Unit	Sample	Asbestos Type	Amount	Hazard	Friable
Ceiling	Acoustic Tile	Ceiling Tiles (lay-in), 2x4 fibreglass			C	Y						V0000	Non-Asbestos		None	
Ceiling	Acoustic Tile	Ceiling Tiles (lay-in), 2x4 textured pinhole			C	Y						V0002	None Detected	N.D.	None	
Floor		Terrazzo			A	Y										
Wall		Masonry, concrete block			A	Y										

Client: Hamilton-Wentworth Catholic District Sch
Location: #131 : Storage
Survey Date: 2020-08-12

Site: Elementary
Floor: Basement (0)

Building Name: Old Our Lady of the Assumption
Room #:
Last Re-Assessment: 2023-01-23

Area (sqft): 0

ASBESTOS																
System	Component	Material	Item	Covering	A*	V*	AP*	Good	Fair	Poor	Unit	Sample	Asbestos Type	Amount	Hazard	Friable
Ceiling		Plaster			C	Y						V0007	Chrysotile	<0.5%	None	
Floor		Terrazzo			A	Y										
Wall		Plaster			A	Y						V0007	Chrysotile	<0.5%	None	
Wall		Ceramic Tiles			A	Y										

Client: Hamilton-Wentworth Catholic District Sch
Location: #132 : Stairwell Storage
Survey Date: 2020-08-12

Site: Elementary
Floor: Basement (0)

Building Name: Old Our Lady of the Assumption
Room #:
Last Re-Assessment: 2023-01-23

Area (sqft): 0

ASBESTOS																
System	Component	Material	Item	Covering	A*	V*	AP*	Good	Fair	Poor	Unit	Sample	Asbestos Type	Amount	Hazard	Friable
Ceiling		Drywall and joint compound			C	Y		100(7)			%	S0008AB	Chrysotile	0.5-5%	Confirmed Asbestos	NF
Floor		Concrete (poured)			A	Y										
Wall		Masonry, concrete block			A	Y										

Client: Hamilton-Wentworth Catholic District Sch
Location: #200 : Special Ed 7
Survey Date: 2020-08-12

Site: Elementary
Floor: Basement (0)

Building Name: Old Our Lady of the Assumption
Room #:
Last Re-Assessment: 2023-01-23

Area (sqft): 0

ASBESTOS																
System	Component	Material	Item	Covering	A*	V*	AP*	Good	Fair	Poor	Unit	Sample	Asbestos Type	Amount	Hazard	Friable
Ceiling		Masonry, concrete block			C	Y										
Floor		Vinyl Floor Tile and Mastic, 12x12 white with black and grey fleck			A	Y		100(7)			%	V9500	Presumed Asbestos		Presumed Asbestos	NF
Wall		Drywall and joint compound			A	Y		100(7)			%	S0008C	Chrysotile	0.5-5%	Confirmed Asbestos	NF
Wall		Masonry, concrete block			A	Y										

Client: Hamilton-Wentworth Catholic District Sch
Location: #201 : Corridor
Survey Date: 2020-08-12

Site: Elementary
Floor: Basement (0)

Building Name: Old Our Lady of the Assumption
Room #:
Last Re-Assessment: 2023-01-23

Area (sqft): 0

ASBESTOS																
System	Component	Material	Item	Covering	A*	V*	AP*	Good	Fair	Poor	Unit	Sample	Asbestos Type	Amount	Hazard	Friable
Ceiling	Acoustic Tile	Ceiling Tiles (lay-in), 2x4 medium fissure random pinhole			C	Y						V0001	None Detected	N.D.	None	
Floor		Vinyl Floor Tile and Mastic, 12x12 aqua dense fleck			A	Y		100(7)			%	V9500	Presumed Asbestos		Presumed Asbestos	NF
Floor		Vinyl Floor Tile and Mastic, 12x12 beige with brown streak			A	Y		100(7)			%	V9500	Presumed Asbestos		Presumed Asbestos	NF
Floor		Vinyl Floor Tile and Mastic, 9x9 tan with white streak			A	Y		100(7)			%	V9500	Presumed Asbestos		Presumed Asbestos	NF
Piping		Parging Cement	Fitting		C	N		1(7)			EA	V0006	Chrysotile	50-75%	Confirmed Asbestos	F
Piping		Sweatwrap	Insulation		C	N		30			LF	S0009ABC	None Detected	N.D.	None	
Wall		Masonry, concrete block			A	Y										

Client: Hamilton-Wentworth Catholic District Sch
Location: #202 : Classroom 6
Survey Date: 2020-08-12

Site: Elementary
Floor: Basement (0)

Building Name: Old Our Lady of the Assumption
Room #:
Last Re-Assessment: 2023-01-23

Area (sqft): 0

ASBESTOS																
System	Component	Material	Item	Covering	A*	V*	AP*	Good	Fair	Poor	Unit	Sample	Asbestos Type	Amount	Hazard	Friable
Ceiling		Masonry, concrete block			C	Y										
Floor		Vinyl Floor Tile and Mastic, 12x12 white with black and grey fleck			A	Y		100(7)			%	V9500	Presumed Asbestos		Presumed Asbestos	NF
Floor		Vinyl Floor Tile, 9x9 red with white streak			A	Y		100(7)			%	V0004	Chrysotile	0.5-5%	Confirmed Asbestos	NF
Wall		Masonry, concrete block			A	Y										

Client: Hamilton-Wentworth Catholic District Sch
Location: #203 : Classroom 8
Survey Date: 2020-08-12

Site: Elementary
Floor: Basement (0)

Building Name: Old Our Lady of the Assumption
Room #:
Last Re-Assessment: 2023-01-23

Area (sqft): 0

ASBESTOS																
System	Component	Material	Item	Covering	A*	V*	AP*	Good	Fair	Poor	Unit	Sample	Asbestos Type	Amount	Hazard	Friable
Ceiling		Masonry, concrete block			C	Y										
Floor		Vinyl Floor Tile and Mastic, 12x12 white with black and grey fleck			A	Y		100(7)			%	V9500	Presumed Asbestos		Presumed Asbestos	NF
Floor		Carpet			A	Y										
Wall		Masonry, concrete block			A	Y										

Client: Hamilton-Wentworth Catholic District Sch
Location: #204 : Classroom 9
Survey Date: 2020-08-12

Site: Elementary
Floor: Basement (0)

Building Name: Old Our Lady of the Assumption
Room #:
Last Re-Assessment: 2023-01-23

Area (sqft): 0

ASBESTOS																
System	Component	Material	Item	Covering	A*	V*	AP*	Good	Fair	Poor	Unit	Sample	Asbestos Type	Amount	Hazard	Friable
Ceiling		Masonry, concrete block			C	Y										
Floor		Mastic		Vinyl Floor Tile	D	N		100(7)			%	V9500	Presumed Asbestos		Presumed Asbestos	NF
Floor		Vinyl Floor Tile, 12x12 grey dense fleck			A	Y						V0005	None Detected	N.D.	None	
Wall		Masonry, concrete block			A	Y										

Client: Hamilton-Wentworth Catholic District Sch
Location: #205 : Storage
Survey Date: 2020-08-12

Site: Elementary
Floor: Basement (0)

Building Name: Old Our Lady of the Assumption
Room #:
Last Re-Assessment: 2023-01-23

Area (sqft): 0

ASBESTOS																
System	Component	Material	Item	Covering	A*	V*	AP*	Good	Fair	Poor	Unit	Sample	Asbestos Type	Amount	Hazard	Friable
Ceiling		Masonry, concrete block			C	Y										
Floor		Concrete (poured)			A	Y										
Wall		Masonry, concrete block			A	Y										

Client: Hamilton-Wentworth Catholic District Sch
Location: #206 : Storage
Survey Date: 2020-08-12

Site: Elementary
Floor: Basement (0)

Building Name: Old Our Lady of the Assumption
Room #:
Last Re-Assessment: 2023-01-23

Area (sqft): 0

ASBESTOS																
System	Component	Material	Item	Covering	A*	V*	AP*	Good	Fair	Poor	Unit	Sample	Asbestos Type	Amount	Hazard	Friable
Ceiling		Masonry, concrete block			C	Y										
Floor		Concrete (poured)			A	Y										
Wall		Masonry, concrete block			A	Y										

Client: Hamilton-Wentworth Catholic District Sch
Location: #207 : Foyer and Room
Survey Date: 2020-08-12

Site: Elementary
Floor: Basement (0)

Building Name: Old Our Lady of the Assumption
Room #:
Last Re-Assessment: 2023-01-23

Area (sqft): 0

ASBESTOS																
System	Component	Material	Item	Covering	A*	V*	AP*	Good	Fair	Poor	Unit	Sample	Asbestos Type	Amount	Hazard	Friable
Ceiling	Acoustic Tile	Ceiling Tiles (lay-in), 2x4 fibreglass			C	Y						V0000	Non-Asbestos		None	
Floor		Vinyl Floor Tile and Mastic, 9x9 blue with white streaks			A	Y		100(7)			%	V9500	Presumed Asbestos		Presumed Asbestos	NF
Other	Light Fixture	Paper, heat shield			C	Y		1(7)			EA	V9500	Presumed Asbestos		Presumed Asbestos	NF
Other	Sink	Mastic, White, Undercoating			A	N		1(7)			EA	V9500	Presumed Asbestos		Presumed Asbestos	NF
Wall		Masonry, concrete block			A	Y										

Client: Hamilton-Wentworth Catholic District Sch
Location: #209 : Washroom
Survey Date: 2020-08-12

Site: Elementary
Floor: Basement (0)

Building Name: Old Our Lady of the Assumption
Room #:
Last Re-Assessment: 2023-01-23

Area (sqft): 0

ASBESTOS																
System	Component	Material	Item	Covering	A*	V*	AP*	Good	Fair	Poor	Unit	Sample	Asbestos Type	Amount	Hazard	Friable
Ceiling	Acoustic Tile	Ceiling Tiles (lay-in), 2x4 fibreglass			C	Y						V0000	Non-Asbestos		None	
Floor		Mastic		Vinyl Floor Tile	D	N		100(7)			%	V9500	Presumed Asbestos		Presumed Asbestos	NF
Floor		Vinyl Floor Tile, 9x9 red with white streak			A	Y		100(7)			%	V0004	Chrysotile	0.5-5%	Confirmed Asbestos	NF
Other	Light Fixture	Paper, heat shield			C	Y		1(7)			EA	V9500	Presumed Asbestos		Presumed Asbestos	NF
Wall		Masonry, concrete block			A	Y										

Client: Hamilton-Wentworth Catholic District Sch
Location: #210 : Workroom
Survey Date: 2020-08-12

Site: Elementary
Floor: Basement (0)

Building Name: Old Our Lady of the Assumption
Room #:
Last Re-Assessment: 2023-01-23

Area (sqft): 0

ASBESTOS																
System	Component	Material	Item	Covering	A*	V*	AP*	Good	Fair	Poor	Unit	Sample	Asbestos Type	Amount	Hazard	Friable
Ceiling		Masonry, concrete block			C	Y										
Floor		Vinyl Floor Tile and Mastic, 12x12 white with black and grey fleck			A	Y		100(7)			%	V9500	Presumed Asbestos		Presumed Asbestos	NF
Wall		Masonry, concrete block			A	Y										

Client: Hamilton-Wentworth Catholic District Sch
Location: #211 : Stairwell
Survey Date: 2020-08-12

Site: Elementary
Floor: Basement (0)

Building Name: Old Our Lady of the Assumption
Room #:
Last Re-Assessment: 2023-01-23

Area (sqft): 0

ASBESTOS																
System	Component	Material	Item	Covering	A*	V*	AP*	Good	Fair	Poor	Unit	Sample	Asbestos Type	Amount	Hazard	Friable
Ceiling		Masonry, concrete block			C	Y										
Floor		Vinyl Floor Tile and Mastic, 9x9 grey with white and black fleck			A	Y		100(7)			%	V9500	Presumed Asbestos		Presumed Asbestos	NF
Floor		Vinyl Floor Tile and Mastic, 12x12 tan with white streak			A	Y		100(7)			%	V9500	Presumed Asbestos		Presumed Asbestos	NF
Wall		Masonry, concrete block			A	Y										

Client: Hamilton-Wentworth Catholic District Sch
Location: #212 : Staff Room
Survey Date: 2020-08-12

Site: Elementary
Floor: Basement (0)

Building Name: Old Our Lady of the Assumption
Room #:
Last Re-Assessment: 2023-01-23

Area (sqft): 0

ASBESTOS																
System	Component	Material	Item	Covering	A*	V*	AP*	Good	Fair	Poor	Unit	Sample	Asbestos Type	Amount	Hazard	Friable
Ceiling	Acoustic Tile	Ceiling Tiles (lay-in), 2x4 textured pinhole			C	Y						V0002	None Detected	N.D.	None	
Ceiling	Bulkhead	Plaster, Smooth			C	Y						V0007	Chrysotile	<0.5%	None	
Floor		Vinyl Floor Tile and Mastic, 12x12 cream with rose fleck			A	Y		100(7)			%	V9500	Presumed Asbestos		Presumed Asbestos	NF
Other	Sink	Mastic, White, undercoating			A	N		1(7)			EA	V9500	Presumed Asbestos		Presumed Asbestos	NF
Wall		Plaster, Smooth			A	Y						S0007E	Chrysotile	<0.5%	None	
Wall		Masonry, concrete block			A	Y										

Client: Hamilton-Wentworth Catholic District Sch
Location: #213 : Washroom
Survey Date: 2020-08-12

Site: Elementary
Floor: Basement (0)

Building Name: Old Our Lady of the Assumption
Room #:
Last Re-Assessment: 2023-01-23

Area (sqft): 0

ASBESTOS																
System	Component	Material	Item	Covering	A*	V*	AP*	Good	Fair	Poor	Unit	Sample	Asbestos Type	Amount	Hazard	Friable
Ceiling		Plaster			C	Y						V0007	Chrysotile	<0.5%	None	
Floor		Terrazzo			A	Y										
Other	Light Fixture	Paper, heat shield			C	Y		1			EA	V9500	[None]		[Abated]	
Wall		Plaster			A	Y						V0007	Chrysotile	<0.5%	None	
Wall		Masonry, concrete block			A	Y										

Client: Hamilton-Wentworth Catholic District Sch
Location: #214 : Classroom 12
Survey Date: 2020-08-12

Site: Elementary
Floor: Basement (0)

Building Name: Old Our Lady of the Assumption
Room #:
Last Re-Assessment: 2023-01-23

Area (sqft): 0

ASBESTOS																
System	Component	Material	Item	Covering	A*	V*	AP*	Good	Fair	Poor	Unit	Sample	Asbestos Type	Amount	Hazard	Friable
Ceiling		Masonry, concrete block			C	Y										
Floor		Vinyl Floor Tile and Mastic, 12x12 black dense fleck			A	Y		100(7)			%	V9500	Presumed Asbestos		Presumed Asbestos	NF
Floor		Vinyl Floor Tile and Mastic, 12x12 beige with brown and white streak			A	Y		100(7)			%	V9500	Presumed Asbestos		Presumed Asbestos	NF
Floor		Vinyl Floor Tile and Mastic, 12x12 grey with white and black fleck			A	Y		100(7)			%	V9500	Presumed Asbestos		Presumed Asbestos	NF
Wall		Masonry, concrete block			A	Y										

Client: Hamilton-Wentworth Catholic District Sch
Location: #215 : Supply Room
Survey Date: 2020-08-12

Site: Elementary
Floor: Basement (0)

Building Name: Old Our Lady of the Assumption
Room #:
Last Re-Assessment: 2023-01-23

Area (sqft): 0

ASBESTOS																
System	Component	Material	Item	Covering	A*	V*	AP*	Good	Fair	Poor	Unit	Sample	Asbestos Type	Amount	Hazard	Friable
Ceiling		Masonry, concrete block			C	Y										
Floor		Vinyl Floor Tile and Mastic, 12x12 cream with rose fleck			A	Y		100(7)			%	V9500	Presumed Asbestos		Presumed Asbestos	NF
Piping		Parging Cement	Fitting		A	Y		6(7)			EA	V0006	Chrysotile	50-75%	Confirmed Asbestos	F
Wall		Masonry, concrete block			A	Y										

Client: Hamilton-Wentworth Catholic District Sch
Location: #216 : Classroom 13
Survey Date: 2020-08-12

Site: Elementary
Floor: Basement (0)

Building Name: Old Our Lady of the Assumption
Room #:
Last Re-Assessment: 2023-01-23

Area (sqft): 0

ASBESTOS																
System	Component	Material	Item	Covering	A*	V*	AP*	Good	Fair	Poor	Unit	Sample	Asbestos Type	Amount	Hazard	Friable
Ceiling		Masonry, concrete block			C	Y										
Floor		Vinyl Floor Tile and Mastic, 12x12 black dense fleck			A	Y		100(7)			%	V9500	Presumed Asbestos		Presumed Asbestos	NF
Floor		Vinyl Floor Tile and Mastic, 12x12 beige with brown and white streak			A	Y		100(7)			%	V9500	Presumed Asbestos		Presumed Asbestos	NF
Floor		Vinyl Floor Tile and Mastic, 12x12 grey with white and black fleck			A	Y		100(7)			%	V9500	Presumed Asbestos		Presumed Asbestos	NF
Wall		Masonry, concrete block			A	Y										

Client: Hamilton-Wentworth Catholic District Sch
Location: #217 : Stairwell
Survey Date: 2020-08-12

Site: Elementary
Floor: Basement (0)

Building Name: Old Our Lady of the Assumption
Room #:
Last Re-Assessment: 2023-01-23

Area (sqft): 0

ASBESTOS																
System	Component	Material	Item	Covering	A*	V*	AP*	Good	Fair	Poor	Unit	Sample	Asbestos Type	Amount	Hazard	Friable
Ceiling		Plaster			C	Y						V0007	Chrysotile	<0.5%	None	
Ceiling		Masonry, concrete block			C	Y										
Floor		Vinyl Floor Tile and Mastic, 9x9 tan with white streak			A	Y		100(7)			%	V9500	Presumed Asbestos		Presumed Asbestos	NF
Floor		Vinyl Floor Tile and Mastic, 12x12 salmon			A	Y		100(7)			%	V9500	Presumed Asbestos		Presumed Asbestos	NF
Floor		Terrazzo			A	Y										
Wall		Masonry, concrete block			A	Y										

Client: Hamilton-Wentworth Catholic District Sch
Location: #218 : Stairwell
Survey Date: 2020-08-12

Site: Elementary
Floor: Basement (0)

Building Name: Old Our Lady of the Assumption
Room #:
Last Re-Assessment: 2023-01-23

Area (sqft): 0

ASBESTOS																
System	Component	Material	Item	Covering	A*	V*	AP*	Good	Fair	Poor	Unit	Sample	Asbestos Type	Amount	Hazard	Friable
Floor		Mastic		Vinyl Floor Tile	D	N		100(7)			%	V9500	Presumed Asbestos		Presumed Asbestos	NF
Floor		Vinyl Floor Tile, 12x12 beige with dense fleck (installed 2014)			A	Y						V0000	Non-Asbestos		None	
Structure		Concrete (precast)			C	Y										
Wall		Masonry, Concrete block			A	Y										

Legend:



Sample number		Units		Other	
S####	Asbestos sample collected	SF	Square feet	A	Access
V####	Material visually similar to numbered sample collected	LF	Linear feet	V	Visible
V0000	Known non-asbestos material	EA	Each	AP	Air Plenum
V9000	Visually identified as an asbestos material	%	Percentage	F	Friable material
V9500	Material is presumed to be an asbestos material			NF	Non Friable material
				PF	Potentially Friable material

Access	
A	Accessible to all building occupants
B	Accessible to maintenance and operations staff without a ladder
C	Accessible to maintenance and operations staff with a ladder. Also rarely entered, locked areas
D	Not normally accessible

Condition	
Good	No visible damage or deterioration
Fair	Minor, repairable damage, cracking, delamination or deterioration
Poor	Irreparable damage or deterioration with exposed and missing material

Visible	
Y	The material is visible when standing on the floor of the room, without the removal or opening of other building components (e.g. ceiling tiles or access panels).
N	The material is not visible to view when standing on the floor of the room and requires the removal of a building component (e.g. ceilings tiles or access panels) to view and access. Includes rarely entered crawlspaces, attic spaces, etc. Observations will be limited to the extent visible from the access points.

Air Plenum	
Yes or No	The material is in a return air plenum or in a direct airstream or there is evidence of air erosion (e.g. duct for heating or cooling blowing directly on or across an ACM). This field is only completed where Air Plenum consideration is required by regulation.

Colour Coding	
	The material is known to contain regulated concentrations of asbestos; either by analytical results or visible identification (use of the V9000 code).
	The material is presumed to contain asbestos; based on visual appearances; typically a material known to historically contain asbestos; however, not sampled due to limited access or the destructive nature of the sampling.

Action					
(1)	Clean up of ACM Debris	(2)	Precautions for Access Which may Disturb ACM Debris	(3)	ACM removal
(4)	Precautions for Work Which may Disturb ACM in Poor Condition	(5)	Proactive ACM removal (Minimum repair required for fair condition)	(6)	ACM repair
(7)	Management program and surveillance				

APPENDIX V
Drawings

NOT ALL KNOWN OR SUSPECTED ASBESTOS BUILDING MATERIALS MAY BE DEPICTED ON THE DRAWING. REFER TO THE ASBESTOS REASSESSMENT REPORT FOR A COMPLETE LIST OF KNOWN AND SUSPECTED ASBESTOS BUILDING MATERIALS.

LEGEND IS COLOUR DEPENDENT. NON-COLOUR COPIES MAY ALTER INTERPRETATION.

BASE PLAN PROVIDED BY CLIENT.



905-577-6206

www.pinchin.com

LEGEND:

- (X) LOCATION NUMBER
- ⊙ ASBESTOS BULK SAMPLE

ASBESTOS-CONTAINING MATERIALS:

- P PIPE INSULATION
- S SINK UNDERCOATING
- PHS PAPER HEAT SHIELD
- / / / / / ACOUSTIC CEILING TILES
- VINYL FLOOR TILES & MASTIC
- MASTIC

FOR CLARITY, THE FOLLOWING ASBESTOS-CONTAINING MATERIALS ARE PRESENT BUT NOT DEPICTED ON THE DRAWINGS
 · DRYWALL JOINT COMPOUND

CLIENT:



Hamilton-Wentworth
Catholic District School Board
Believing. Achieving. Serving

LOCATION:

OUR LADY OF THE ASSUMPTION
55 HIGHWAY 20 SOUTH
STONE CREEK, ONTARIO

TITLE:

ASBESTOS REASSESSMENT
GROUND FLOOR

DATE:

APRIL 2023

PROJECT # :

320582.001

DRAWN BY:

NL

DRAWING:

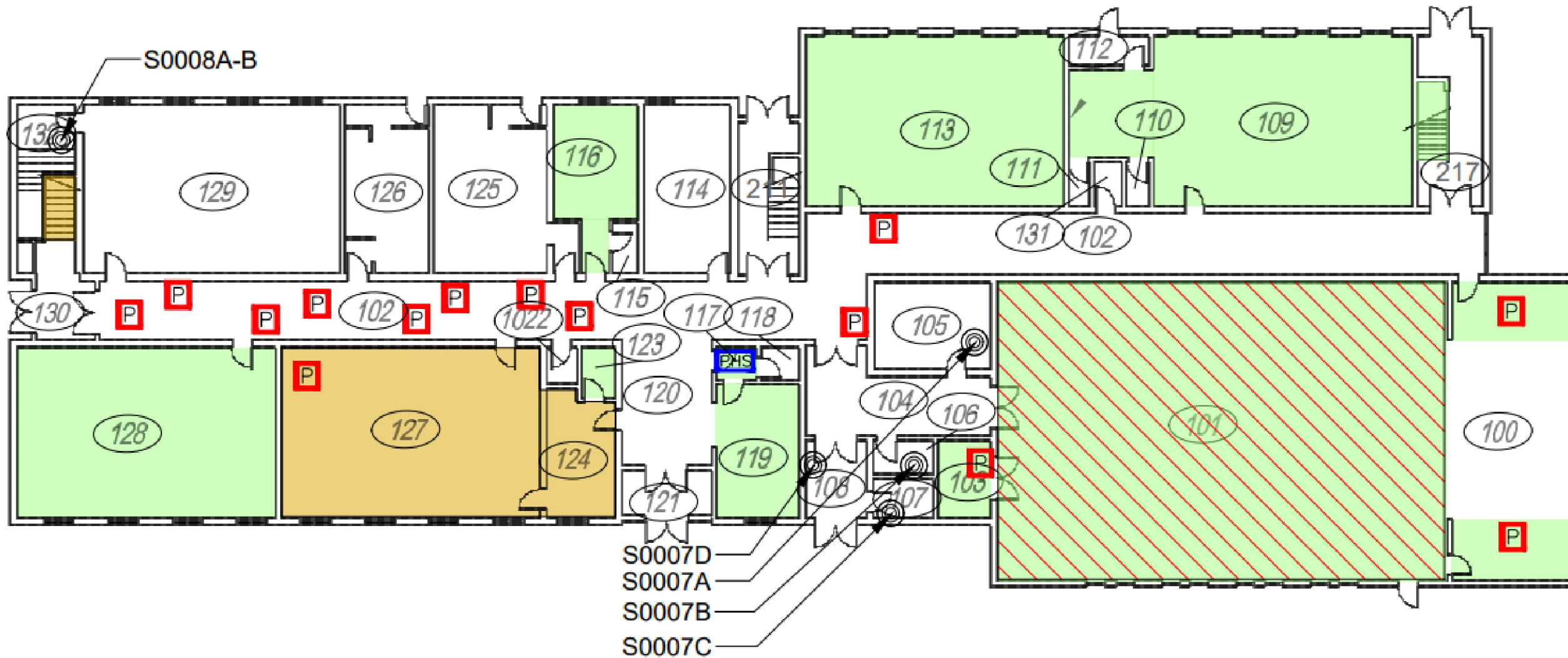
CHECKED BY:

EB

1 OF 2

SCALE:

NTS



NOT ALL KNOWN OR SUSPECTED ASBESTOS BUILDING MATERIALS MAY BE DEPICTED ON THE DRAWING. REFER TO THE ASBESTOS ASSESSMENT REPORT FOR A COMPLETE LIST OF KNOWN AND SUSPECTED ASBESTOS BUILDING MATERIALS.

LEGEND IS COLOUR DEPENDENT. NON-COLOUR COPIES MAY ALTER INTERPRETATION.

BASE PLAN PROVIDED BY CLIENT.



905-577-6206

www.pinchin.com

LEGEND:

- (X) LOCATION NUMBER
- ⊙ ASBESTOS BULK SAMPLE

ASBESTOS-CONTAINING MATERIALS:

- P PIPE INSULATION
- S SINK UNDERCOATING
- PHS PAPER HEAT SHIELD
- ACOUSTIC CEILING TILES
- VINYL FLOOR TILES & MASTIC
- MASTIC

FOR CLARITY, THE FOLLOWING ASBESTOS-CONTAINING MATERIALS ARE PRESENT BUT NOT DEPICTED ON THE DRAWINGS
 · DRYWALL JOINT COMPOUND

CLIENT:



Hamilton-Wentworth
Catholic District School Board
Believing, Achieving, Serving

LOCATION:

OUR LADY OF THE ASSUMPTION
55 HIGHWAY 20 SOUTH
STONE CREEK, ONTARIO

TITLE:

ASBESTOS REASSESSMENT
SECOND FLOOR

DATE:

APRIL 2023

PROJECT # :

320582.001

DRAWN BY:

NL

DRAWING:

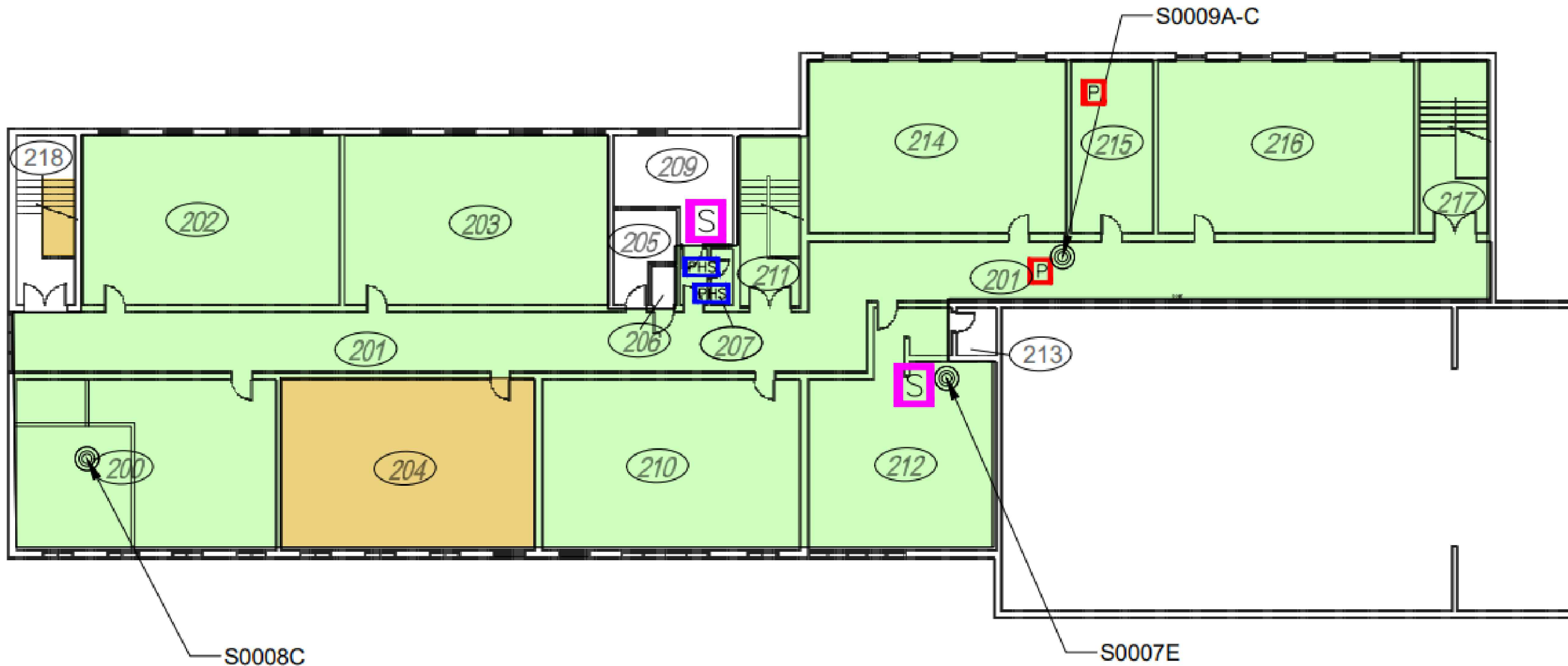
CHECKED BY:

EB

2 OF 2

SCALE:

NTS



APPENDIX VI
Methodology



1.0 GENERAL

Pinchin conducted an inspection of previously identified asbestos-containing materials (ACM) to evaluate the current condition of all accessible ACM identified in the most recent assessment.

The surveyor made reference to any existing assessment or abatement reports (as provided by the Client).

Materials listed as exclusions in the previous reports have remained as exclusions. Sampling, assessment or verification of excluded materials was not conducted.

Existing sampling data, where available, was reviewed and relied upon.

Where sampling was conducted, sample collection was conducted in accordance with our Standard Operating Procedures.

A separate set of samples was collected of each type of homogenous material suspected to contain asbestos. A homogenous material is defined by the US EPA as material that is uniform in texture and appearance, was installed at one time, and is unlikely to consist of more than one type or formulation of material. The homogeneous materials were determined by visual examination and available information on the phases of construction and prior renovations.

Samples were collected at a rate that is in compliance with the requirements of local regulations and guidelines. The sampling strategy was also based on known ban dates and phase out dates of the use of asbestos; sampling of certain building materials is not conducted after specific construction dates. In addition, to be conservative, several years past these dates are added to account for some uncertainty in the exact start / finish date of construction and associated usage of ACM. In some cases, manufactured products such as asbestos cement pipe were visually identified without sample confirmation.

The asbestos analysis was completed using a stop-positive approach. Only one result meeting the regulated criteria was required to determine that a material is asbestos-containing, but all samples must be analyzed to conclusively determine that a material is non-asbestos. The laboratory stopped analyzing samples from a homogeneous material once a result equal to or greater than the regulated criteria is detected in any of the samples of that material. All samples of a homogeneous material were analyzed if no asbestos is detected. In some cases, all samples were analyzed in the sample set regardless of result.

The analysis was performed in accordance with Test Method EPA/600/R-93/116: Method for the Determination of Asbestos in Bulk Building Materials, July 1993.

The following summarizes the criteria of asbestos definitions.



Jurisdiction	Friable	Non-Friable
Ontario	0.5%	0.5%

Where building materials are described in the report as “non-asbestos” or “does not contain asbestos”, this means that either no asbestos was detected by the analytical method utilized in any of the multiple samples or, if detected, it is below the lower limit of an asbestos-containing material in the applicable regulation. Additionally, these terms are used for materials which historically are known to not include asbestos in their manufacturing.

Asbestos materials are evaluated in order to make recommendations regarding remedial work. The priority for remedial action is based on several factors:

- Friability (friable or non-friable).
- Condition (good, fair, poor, debris).
- Accessibility (ranking from accessible to all building users to inaccessible).
- Visibility (whether the material is obscured by other building components).
- Efficiency of the work (for example, if damaged ACM is being removed in an area, it may be most practical to remove all ACM in the area even if it is in good condition).

For a complete description of the Evaluation Criteria and Basis of Recommendations, refer to Annex A.

Template: Methodology for Asbestos Reassessment, HAZ, July 27, 2021

METHODOLOGY ANNEX A EVALUATION CRITERIA

1.0 EVALUATION CRITERIA AND BASIS OF RECOMMENDATIONS

The detailed asbestos assessment provides information regarding the location, condition, accessibility and friability of the asbestos-containing materials (ACM). In order to make recommendations for compliance with current regulations, Pinchin developed the following criteria.

2.0 EVALUATION OF CONDITION

2.1 Friable Sprayed or Trowelled Fireproofing, Thermal Insulation and Texture Finishes (Surfacing Materials)

To evaluate the condition of ACM sprayed or trowelled on fireproofing, sprayed or trowelled thermal insulation (non-mechanical), or texture, decorative or acoustic finishes, the following criteria are applied:

Good	Surface of material shows no significant signs of damage, deterioration or delamination. Good condition includes unencapsulated or unpainted fireproofing or texture finishes, where no or limited delamination or damage is observed, or encapsulated fireproofing or texture finishes where the encapsulant or paint has been applied after the damage or fallout occurred.
Poor	A sprayed material that shows signs of significant damage or is significantly delaminating or deteriorating. This may be limited to surface delamination or some portion of the substrate may be exposed.

In Locations where damage exists in isolated areas, both good and poor condition may be applicable. The extent of each condition will be recorded. Fair condition is not utilized in the evaluation of ACM sprayed or trowelled fireproofing, sprayed or trowelled thermal insulation (non-mechanical), or texture, decorative or acoustic finishes.

The evaluation of the above products above ceilings may be limited by the number of observations and by building components such as ducts or full height walls that obstruct the above ceiling observations.

2.2 Friable Mechanical or Thermal System Insulation (TSI)

To evaluate the condition of mechanical insulation on vessels, boilers, breeching, ducts, pipes, fan units, equipment etc. the following criteria are applied:

Good	Insulation is completely covered in jacketing and exhibits no evidence of damage or deterioration. No insulation is exposed. Includes conditions where the jacketing has minor damage (i.e. scuffs or stains), but the jacketing is not penetrated.
Fair	Minor penetrating damage to jacketed insulation (cuts, tears, nicks, deterioration or delamination) or undamaged insulation that has never been jacketed. Insulation is exposed but not showing surface disintegration. The extent of missing insulation ranges from minor to none. Damage can be repaired.

Poor	Original insulation jacket is missing, damaged, deteriorated or delaminated. Insulation is exposed and significant areas have been dislodged. Damage cannot be readily repaired. Includes components where insulation may have been removed incompletely.
-------------	---

The evaluation of mechanical insulation may be limited by the number of observations made and building components such as ducts or full height walls that obstruct observations. It is often not possible to observe each foot of mechanical insulation from all angles.

2.3 Potentially Friable Materials and Miscellaneous Friable Materials

Potentially friable ACM are products that are basically non-friable while in place but have the potential to generate friable dust upon removal or if significantly disturbed without appropriate procedures. These products may become friable if damaged. Potentially friable materials include materials such as acoustic ceiling tiles and plaster. To evaluate the condition of potentially friable materials, the following criteria are applied:

Good	No significant damage or deterioration. Still serving its intended use as a building material or finish.
Fair	Showing signs of some cracking or breakage, but is not deteriorating (e.g. cracked plaster, broken but in place ceiling tile, missing tile or section of plaster etc.). The condition is such that it is still serving its intended use as a building material or finish but may require repair for mainly cosmetic purposes.
Poor	Significant deterioration or breaking apart of the material. Material has deteriorated to the point it is not serving its intended use as building material or finish. Material has deteriorated to a point it has become friable. Normally potentially friable ACM in Poor condition is not repairable and requires at least localized removal and replacement.

2.4 Non-Friable Materials

Non-friable ACM cover a wide range of products with a wide variation in their tendency to release dust or asbestos fibres to the air. Many of these materials, (particularly where the matrix is an unweathered bitumen, asphalt or tar material) do not release fibres except in very unusual circumstances or during significant disturbance (e.g. use of abrasive power tools). Others with a cementitious matrix (asbestos-cement products) can more readily release dust due to abrasion, demolition, weathering, etc. The potential for asbestos release from non-friable ACM is always lower than from friable ACM. To evaluate the condition of non-friable Materials, the following criteria are applied:

Good	No significant damage or deterioration. Still serving its intended use as a building material or finish.
-------------	--

Fair	Showing signs of some cracking or breakage but is not deteriorating (e.g. cracked vinyl floor tile, missing piece of tile or transite, etc.). The condition is such that it is still serving its intended use as a building material or finish but may require repair for mainly cosmetic purposes.
Poor	Significant deterioration or breaking apart of the material to the point at which it cannot be repaired, and it will require at least local removal. Material has deteriorated to the point it is not serving its intended use as building material or finish. Material may have deteriorated to a point where traffic or disturbance may cause it to become friable.

2.5 Evaluation of ACM Debris

The identification of the exact location or presence of debris on the top of ceiling tiles is limited by the number of observations made and the presence of building components such as ducts or full height walls that obstruct observations.

The presence of fallen or dislodged ACM is noted separately from the ACM source and is referred to as Debris. Debris may be friable if from a friable ACM source or a badly deteriorated non-friable ACM source. Debris may also be non-friable (such as fallen pieces of transite sheet or mastic fittings, or broken, dislodged floor tiles).

Debris	Debris may be friable or non-friable but is always identified as debris.
---------------	--

2.6 Evaluation of Presumed Asbestos-Containing Material (PACM)

Presumed asbestos-containing materials (PACM), are building materials that may contain asbestos but were not sampled or analyzed due to inaccessibility or the need to perform destructive testing to obtain a reasonable sample set. Evaluation of these materials is based on the assumption that these PACM are asbestos-containing.

A list of PACM is provided in the report and they are generally not included in the detailed room by room reports. Typically, they are excluded because they are inaccessible or present in very small quantities. If PACM are evaluated, Pinchin uses the criteria that correspond with the type (and friability) of the material listed above.

3.0 EVALUATION OF ACCESSIBILITY

The accessibility of building materials known or suspected of being ACM is rated according to the following criteria:

Access (A)	Common areas of the building within reach of all building users (approximately 8' - 9' from floor or standard ceiling height). Includes other areas where occupant activities may result in disturbance of material that is not normally within reach from floor level, but may be disturbed by common activities (e.g. gymnasiums, workshops)
Access (B)	Areas of the building accessed primarily by Maintenance/Caretaking/Janitorial Staff and within reach without use of a ladder. Includes areas within reach in Boiler Rooms, Electrical Rooms, Janitors Closets, Elevator Rooms, Mechanical Rooms, etc. Includes materials within reach from fixed ladders or catwalks, mezzanines, and accessible pipe chases.
Access (C) and Visible	Areas of the building above 8' - 9' where use of a ladder or scaffold is required to reach the ACM. Only includes ACM that are visible to view without the removal or opening of other building components such as ceiling tiles or service access panels. Visible column on HMIS sheets will say YES.
Access (C) and not Visible	Areas of the building above 8' - 9' where use of a ladder or scaffold is required to reach the ACM. Includes ACM that are not visible to view and require the removal of a building component to see, such as ceilings tiles or access panels to view and access. Includes rarely entered crawl spaces, attic spaces, etc. Observations will be limited to the extent visible from the access points. Visible column on HMIS sheets will say NO.
Access (D)	Areas of the building behind inaccessible solid ceiling systems, walls or equipment etc. where demolition of the ceiling, wall or equipment etc. is required to reach the ACM. Material inaccessible due to height or location or is only accessed under unusual situations. Evaluation of condition and extent of ACM is limited or impossible, depending on the surveyor's ability to visually examine materials in Access D.

4.0 ACTION MATRIX AND DEFINITIONS

Pinchin's evaluation of the viability of a specific asbestos control option is based on the consideration of the friability, condition, accessibility and visibility of a material. The logic used is that damaged ACM located in an area frequently accessed by all building occupants is of a higher priority than damaged ACM located in an infrequently accessed service area. The action matrix considers the potential for fibre release (primarily from friable ACM) and the possible concerns from regulatory bodies and many building occupants to all damaged ACM (including non-friable).

In any building with asbestos, many current regulations require an Asbestos Management Program be implemented. Depending on the condition and the accessibility, more active measures such as repair or removal may be recommended. The following matrix provides guidance for recommended Actions in the absence of renovation or demolition. In the event of construction or maintenance activity which will disturb ACM more aggressive control or removal will be required.

4.1 Action Matrix

The following tables outline the action decisions based on the relationship of assessed factors. Table I applies to friable ACM. Table II applies to non-friable ACM.

Table I Decision Matrix for Friable ACM

Access	Condition			Debris
	Good	Fair	Poor	
(A)	Action 5 ¹	Action 5 ²	Action 3	Action 1
(B)	Action 7	Action 6 ³	Action 3	Action 1
(C) Visible	Action 7	Action 6	Action 3	Action 2
(C) Not Visible	Action 7	Action 7	Action 4	Action 2
(D)	Action 7	Action 7	Action 7	Action 7

Table II Decision Matrix for Potentially Friable and Non-Friable ACM

Access	Condition			Debris
	Good	Fair	Poor	
(A)	Action 7	Action 7 ⁴	Action 3	Action 1
(B)	Action 7	Action 7	Action 3	Action 1
(C) Visible	Action 7	Action 7	Action 4	Action 2
(C) Not Visible	Action 7	Action 7	Action 4	Action 2
(D)	Action 7	Action 7	Action 7	Action 7

4.2 Action Definitions

The following are the definitions in the Action Matrix Table presented above:

Action Definitions

Action 1	Clean-Up of ACM Debris Restrict access that is likely to cause a disturbance of the ACM Debris and clean up ACM Debris. Utilize appropriate asbestos precautions.
-----------------	--

¹ If friable ACM in access (A)/Good condition is not proactively removed Action 7 (Manage) is recommended.

² If friable ACM in access (A)/Fair condition is not proactively removed repair is recommended.

³ If friable ACM in access (B)/Fair condition is likely to be disturbed after repair proactive removal is recommended.

⁴ Action 7 is recommended for all non-friable ACM in Fair condition however some clients may wish to repair or take some action primarily for cosmetic reasons

Action Definitions

Action 2	<p>Precautions for Access Which may Disturb ACM Debris</p> <p>Use appropriate means to isolate the debris or to limit entry to the area which may disturb the material. At locations where ACM Debris can remain in place in lieu of removal or clean-up (e.g. Debris on top of ceiling tiles or behind lockable door), Utilize appropriate asbestos precautions to enter the area if this will disturb debris. The precautions will be required until the ACM Debris has been cleaned up.</p>
Action 3	<p>ACM Removal</p> <p>Remove ACM. Utilize asbestos procedures appropriate to the scope of the removal work. Until it is removed, restrict access to the material so it is not disturbed.</p>
Action 4	<p>Precautions for Work Which may Disturb ACM in Poor Condition. Utilize appropriate asbestos precautions if ACM may be disturbed by work on or near ACM. This does not require restricting access to the area, only control of work which may contact or disturb the ACM. Removal is the only viable option if work will disturb ACM.</p>
Action 5	<p>Proactive ACM Removal</p> <p>Remove friable ACM where the presence of friable asbestos in Good condition is not desirable. If friable ACM in Fair condition is not removed, then Repair friable ACM.</p>
Action 6	<p>ACM Repair</p> <p>Repair friable ACM in Fair condition which is not likely to be damaged again or disturbed by normal use of the area or room. Pinchin recommends proactive removal if friable ACM is likely to be damaged or disturbed during normal use of the area or room</p>
Action 7	<p>Asbestos Management Program with Routine Surveillance Implement an Asbestos Management Program, including routine surveillance of ACM. Reassess materials regularly (typically once per year).</p>

Master Template: Methodology Annex A to Appendix I Evaluation Criteria, HAZ, January 10, 2020